



# 2015 Updating and Screening Assessment for **Central Bedfordshire Council**

In fulfillment of Part IV of the  
Environment Act 1995  
Local Air Quality Management

**Date: August, 2015**

<b>Local Authority Officer</b>	Kay Sterling
<b>Department</b>	Public Protection
<b>Address</b>	Priory House, Monks Walk, Chicksands, Shefford, Bedfordshire, SG17 5TQ
<b>Telephone</b>	0300 300 5065
<b>e-mail</b>	kay.sterling@centralbedfordshire.gov.uk
<b>Report Reference number</b>	CBC/USA2015
<b>Date</b>	August 2015

## Executive Summary

Central Bedfordshire Council came into force on 1<sup>st</sup> April 2009 comprising of the legacy authorities of Mid Bedfordshire District Council, South Bedfordshire District Council and parts of Bedfordshire County Council.

Data is collected by a continuous analyser - monitoring nitrogen dioxide (NO<sub>2</sub>), Particulate Matter (PM<sub>10</sub> and PM<sub>2.5</sub>) and diffusion tubes (NO<sub>2</sub>).

The Air Quality Management Area in Dunstable was declared in 2004 in respect of the annual NO<sub>2</sub> objective.

Work has now commenced on building the A5 – M1 Link Road (Dunstable northern bypass) and Woodside Link Road.

Following public consultations, two new Air Quality Management Areas have now been declared in Ampthill (for the annual NO<sub>2</sub> objective) and Sandy (for the annual and hourly NO<sub>2</sub> objective). Work will now concentrate on developing draft Action Plans.

# Table of contents

<b>1</b>	<b>Introduction .....</b>	<b>6</b>
1.1	Description of Local Authority Area .....	6
1.2	Purpose of Report.....	7
1.3	Air Quality Objectives .....	7
1.4	Summary of Previous Review and Assessments .....	9
<b>2</b>	<b>New Monitoring Data .....</b>	<b>15</b>
2.1	Summary of Monitoring Undertaken .....	15
2.1.1	Automatic Monitoring Sites .....	15
2.1.2	Non-Automatic Monitoring Sites .....	18
2.2	Comparison of Monitoring Results with Air Quality Objectives .....	22
2.2.1	Nitrogen Dioxide .....	22
2.2.2	PM <sub>10</sub> .....	32
2.2.3	Sulphur Dioxide.....	35
2.2.4	Benzene.....	36
2.2.5	Other pollutants monitored .....	36
<b>3</b>	<b>Road Traffic Sources .....</b>	<b>38</b>
3.1	Narrow Congested Streets with Residential Properties Close to the Kerb .....	38
3.2	Busy Streets Where People May Spend 1-hour or More Close to Traffic.....	38
3.3	Roads with a High Flow of Buses and/or HGVs. ....	38
3.4	Junctions.....	39
3.5	New Roads Constructed or Proposed Since the Last Round of Review and Assessment.....	39
3.6	Roads with Significantly Changed Traffic Flows.....	39
3.7	Bus and Coach Stations .....	39
<b>4</b>	<b>Other Transport Sources.....</b>	<b>40</b>
4.1	Airports.....	40
4.2	Railways (Diesel and Steam Trains) .....	40
4.2.1	Stationary Trains.....	40
4.2.2	Moving Trains .....	41
4.3	Ports (Shipping) .....	41
<b>5</b>	<b>Industrial Sources.....</b>	<b>42</b>
5.1	Industrial Installations .....	42
5.1.1	New or Proposed Installations for which an Air Quality Assessment has been Carried Out.....	42
5.1.2	Existing Installations where Emissions have Increased Substantially or New Relevant Exposure has been Introduced .....	42
5.1.3	New or Significantly Changed Installations with No Previous Air Quality Assessment.....	42

5.2	Major Fuel (Petrol) Storage Depots .....	42
5.3	Petrol Stations.....	43
5.4	Poultry Farms.....	43
<b>6</b>	<b>Commercial and Domestic Sources .....</b>	<b>44</b>
6.1	Biomass Combustion – Individual Installations .....	44
6.2	Biomass Combustion – Combined Impacts.....	44
6.3	Domestic Solid-Fuel Burning .....	44
<b>7</b>	<b>Fugitive or Uncontrolled Sources.....</b>	<b>45</b>
<b>8</b>	<b>Conclusions and Proposed Actions.....</b>	<b>46</b>
8.1	Conclusions from New Monitoring Data .....	46
8.2	Conclusions from Assessment of Sources .....	47
8.3	Proposed Actions.....	47
<b>9</b>	<b>References.....</b>	<b>48</b>

## List of Tables

1.2	Summary of previous rounds of Review and Assessment
2.1	Details of automatic monitoring site
2.2	Details of non-automatic monitoring sites
2.3	Results of automatic monitoring of NO <sub>2</sub> : annual mean objective
2.4	Results of automatic monitoring of NO <sub>2</sub> : hourly objective
2.5	Results of non-automatic monitoring (NO <sub>2</sub> diffusion tubes) 2014
2.6	Results of non-automatic monitoring (NO <sub>2</sub> diffusion tubes) 2010-2014
2.7	Results of automatic monitoring of PM <sub>10</sub> : comparison with annual mean obj
2.8	Results of automatic monitoring of PM <sub>10</sub> : comparison with 24hr mean obj
2.2.5	National Air Quality Standards & Objectives for ground level ozone (O <sub>3</sub> )

## List of Figures

1.1	AQMA boundary – Dunstable
1.2	AQMA boundary – Ampthill
1.3	AQMA boundary - Sandy

## Appendices

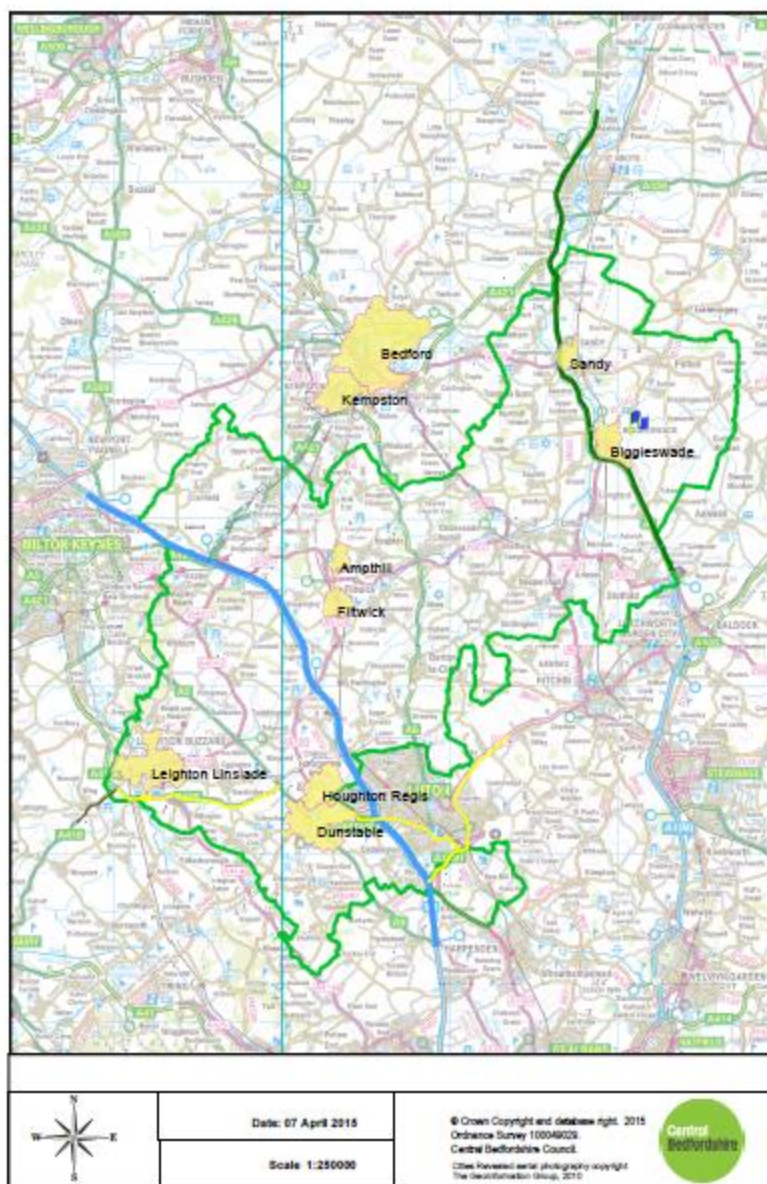
Appendix A:	QA/QC Data
Appendix B:	Diffusion tube (non-automatic) sites – location plans
Appendix C:	Diffusion tube (non-automatic) sites – monthly results
Appendix D:	Luton Airport air quality data

# 1 Introduction

## 1.1 Description of Local Authority Area

Central Bedfordshire Council came into force on the 1<sup>st</sup> April 2009. The legacy authorities were South Bedfordshire District Council, Mid Bedfordshire District Council and aspects of Bedfordshire County Council.

Central Bedfordshire covers an area of 716 square kilometres (see map below). The estimated population of is 254,400 (based on 2011 census figures). The area is mainly rural but has some market and larger towns distributed throughout.



Central Bedfordshire is situated some 30 miles to the north of London and has excellent links to the national motorway network having the M1, A1, A5 and the A6 running through the area and the ease of access to the M25, M11 and M40.

Rail links from Leighton Buzzard mean London Euston can be reached in forty minutes. Arlesey, Biggleswade and Sandy are served by the Peterborough to Kings Cross line whilst Harlington and Flitwick are served by the Bedford to St Pancras International line. Rail freight services are also available from nearby Luton railway station.

Central Bedfordshire Council is a member of the Herts and Beds Air Quality Monitoring Network comprising of all the local authorities in the two counties, plus Luton Airport.

Data is collected by continuous analysers and nitrogen dioxide diffusion tubes

The major source of pollution in the district is from road transportation.

## **1.2 Purpose of Report**

This report fulfils the requirements of the Local Air Quality Management process as set out in Part IV of the Environment Act (1995), the Air Quality Strategy for England, Scotland, Wales and Northern Ireland 2007 and the relevant Policy and Technical Guidance documents. The LAQM process places an obligation on all local authorities to regularly review and assess air quality in their areas, and to determine whether or not the air quality objectives are likely to be achieved. Where exceedences are considered likely, the local authority must then declare an Air Quality Management Area (AQMA) and prepare an Air Quality Action Plan (AQAP) setting out the measures it intends to put in place in pursuit of the objectives.

The objective of this Updating and Screening Assessment is to identify any matters that have changed which may lead to risk of an air quality objective being exceeded. A checklist approach and screening tools are used to identify significant new sources or changes and whether there is a need for a Detailed Assessment. The USA report should provide an update of any outstanding information requested previously in Review and Assessment reports.

## **1.3 Air Quality Objectives**

The air quality objectives applicable to LAQM in England are set out in the Air Quality (England) Regulations 2000 (SI 928), The Air Quality (England) (Amendment) Regulations 2002 (SI 3043), and are shown in Table 1.1. This table shows the objectives in units of microgrammes per cubic metre  $\mu\text{g}/\text{m}^3$  (milligrammes per cubic metre,  $\text{mg}/\text{m}^3$  for carbon monoxide) with the number of exceedences in each year that are permitted (where applicable).

Table 1.1 Air Quality Objectives included in Regulations for the purpose of LAQM in England

Pollutant	Air Quality Objective		Date to be achieved by
	Concentration	Measured as	
Benzene	16.25 $\mu\text{g}/\text{m}^3$	Running annual mean	31.12.2003
	5.00 $\mu\text{g}/\text{m}^3$	Running annual mean	31.12.2010
1,3-Butadiene	2.25 $\mu\text{g}/\text{m}^3$	Running annual mean	31.12.2003
Carbon monoxide	10.0 $\text{mg}/\text{m}^3$	Running 8-hour mean	31.12.2003
Lead	0.5 $\mu\text{g}/\text{m}^3$	Annual mean	31.12.2004
	0.25 $\mu\text{g}/\text{m}^3$	Annual mean	31.12.2008
Nitrogen dioxide	200 $\mu\text{g}/\text{m}^3$ not to be exceeded more than 18 times a year	1-hour mean	31.12.2005
	40 $\mu\text{g}/\text{m}^3$	Annual mean	31.12.2005
Particles ( $\text{PM}_{10}$ ) (gravimetric)	50 $\mu\text{g}/\text{m}^3$ , not to be exceeded more than 35 times a year	24-hour mean	31.12.2004
	40 $\mu\text{g}/\text{m}^3$	Annual mean	31.12.2004
Sulphur dioxide	350 $\mu\text{g}/\text{m}^3$ , not to be exceeded more than 24 times a year	1-hour mean	31.12.2004
	125 $\mu\text{g}/\text{m}^3$ , not to be exceeded more than 3 times a year	24-hour mean	31.12.2004
	266 $\mu\text{g}/\text{m}^3$ , not to be exceeded more than 35 times a year	15-minute mean	31.12.2005



## 1.4 Summary of Previous Review and Assessments

Table 1.2 Summary of previous reviews and assessments

Authority	Reports produced	Dates produced	Report conclusions
SBDC	1 <sup>st</sup> stage air quality review	1999/2000	CO / 1,3 butadiene / SO <sub>2</sub> / Benzene unlikely to exceed objectives anywhere in district. NO <sub>2</sub> / PM <sub>10</sub> to proceed to 2 <sup>nd</sup> stage
SBDC	Air Quality review & assessment (2 <sup>nd</sup> stage)	April 2000	Concluded 3 <sup>rd</sup> stage review for NO <sub>2</sub> & PM <sub>10</sub> not necessary as levels within objectives. Monitoring to continue.
MBDC	1 <sup>st</sup> review & assessment	2000	This assessment concluded that the air quality objectives contained in the Air Quality Regulations 1997 would be achieved throughout the District.
SBDC	USA	April 2003	Concluded that due to a number of changes in circumstances, it was considered that nitrogen dioxide (NO <sub>2</sub> ) and particulate matter (PM <sub>10</sub> ) were in danger of being breached. However objectives for CO / SO <sub>2</sub> / benzene / 1, 3 – butadiene and lead would be met.
MBDC	USA	2003	Due to a number of changes in circumstances, although it was thought that the objectives for carbon monoxide, benzene, 1, 3 – butadiene and lead would be met, it was considered that the objectives for SO <sub>2</sub> , NO <sub>2</sub> and PM <sub>10</sub> were in danger of being breached.
SBDC	Detailed Assessment	2004	Concentrated on levels of NO <sub>2</sub> and particulate matter in Dunstable town centre as a result of traffic using the A5, A505 and B489. The conclusion of the report was that the annual mean nitrogen dioxide objective was likely to be breached at the facades of buildings along all roads at the town centre junction and recommended that an Air Quality Management Area (AQMA) be declared. The report also predicted that the 2004 annual mean and 24-hour objectives for PM <sub>10</sub> are unlikely to be exceeded.
MBDC	Detailed Assessment	2004	Concentrated on ground level ambient concentrations of SO <sub>2</sub> as a result of emissions from Stewartby Brickworks and levels of NO <sub>2</sub> / PM <sub>10</sub> as a result of traffic using the A1 Sandy roundabout. Conclusions resulted in the AQMA declaration for SO <sub>2</sub> levels around the brickworks and that more monitoring was required for the A1 Sandy roundabout junction to accurately assess current levels of NO <sub>2</sub> .
SBDC	Declaration of AQMA in Dunstable	January 2005	AQMA officially declared by Council
SBDC	Progress Report	December 2005	Following the recent declaration of an

## Central Bedfordshire Council

			Air Quality Management Area, the next phase of the process is the production of Stage 4 report (including source apportionment) and an Action Plan (to identify options to reduce concentrations of pollutant(s) in order to achieve the objective(s)).
SBDC	Stage 4 Report / source apportionment	2005	<p>The source apportionment study indicated that background NO<sub>x</sub> levels are generally the major contributor to ambient NO<sub>x</sub> concentrations at the receptors included in the study. Emissions from taxis idling in ranks and vehicles in car parks are a minor source of NO<sub>x</sub>. However, there are two large sources of NO<sub>x</sub> over which the council has some control:</p> <p>Cars and HGVs travelling along the roads in question are major source of NO<sub>x</sub>. In particular, HGVs are responsible for a large portion of these emissions despite their relatively small flows.</p> <ul style="list-style-type: none"> <li>■ Buses idling at stops contribute large amounts of NO<sub>x</sub> to the immediate surroundings and create small areas of high concentrations that may affect nearby buildings.</li> </ul> <p>Reductions in NO<sub>2</sub> concentration of 22% and 5% respectively are required at the receptors near the High Street North and Church Street bus stops to reduce the ambient concentration to meet the 40 µg/m<sup>3</sup> objective.</p>
MBDC	Progress Report	2005	Updating on changes since the last review and assessment report
MBDC	Declaration of AQMA in the vicinity of Stewartby	2005	AQMA officially declared by Council
SBDC	USA	2006	Identified Chalton as another possible area where Air Quality Objectives might be breached and further monitoring (via diffusion tubes) commenced.
MBDC	USA	2006	<p>identified the risk of objectives being exceeded for CO, benzene, 1,3 – butadiene, lead, nitrogen dioxide and particulate matter (PM<sub>10</sub>) is not significant.</p> <p>The Stewartby Brickworks will be subject to a Further Assessment.</p>
SBDC	Progress Report	2007	Changes needed to AQAP after consultation
MBDC	Further Assessment	2007	Concluded that the AQMA remain in place as originally declared
MBDC	Air Quality Action Plan	2007	Identified actions to address the SO <sub>2</sub> levels – accepted by Defra
SBDC	Detailed Assessment	2008	Identified possibility of annual mean NO <sub>2</sub> objective likely to be exceeded at

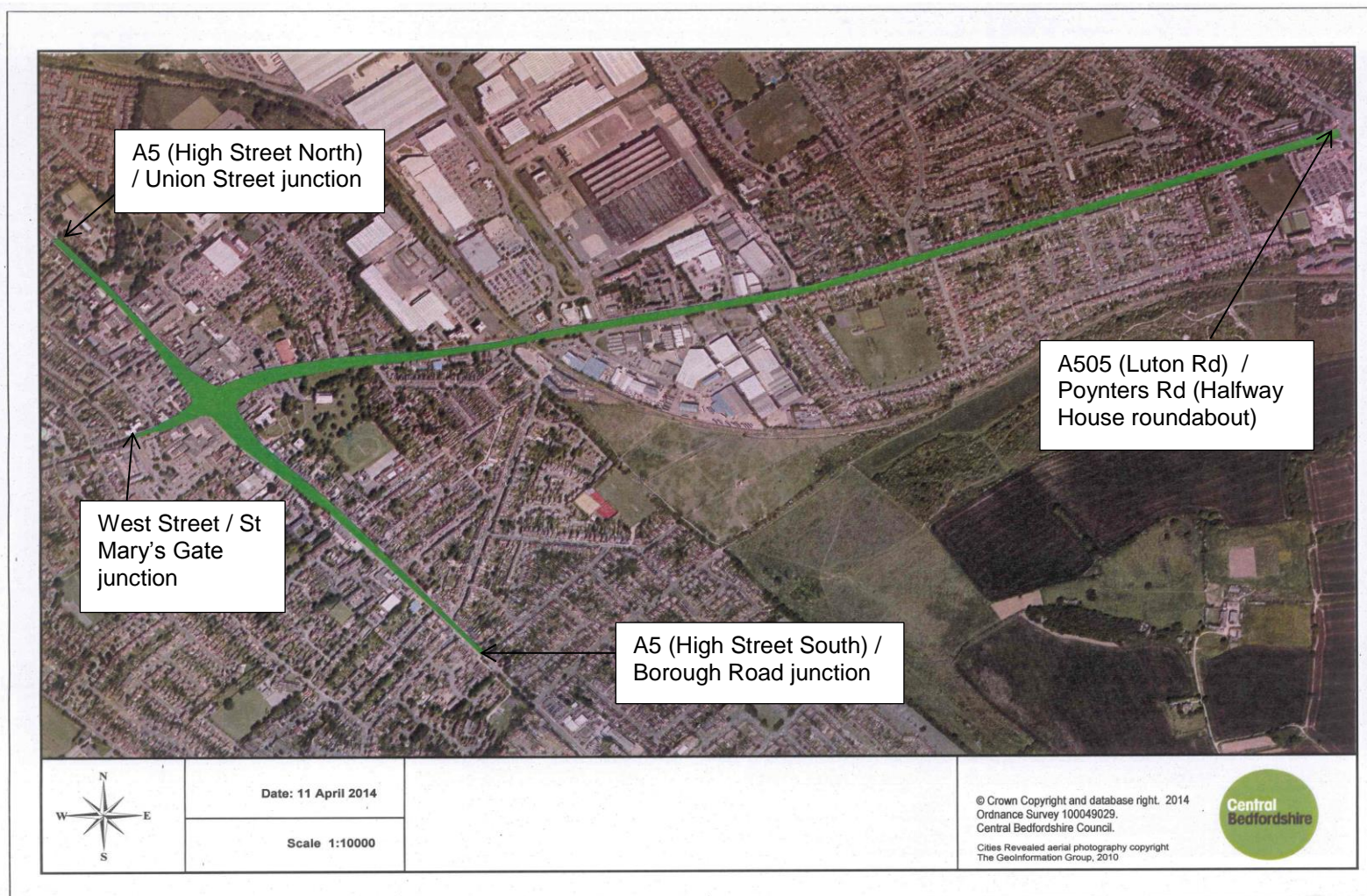
## Central Bedfordshire Council

			4 receptors out of six. NO <sub>2</sub> hourly objectives unlikely to be breached.
CBC	USA	2009	<p>Following Detailed Assessments carried out in 2008 by both Mid and South Beds District Councils; it was recommended that AQMAs be declared in Sandy and Chalton, both in relation to the annual NO<sub>2</sub> Air Quality Objective. Consultations will be carried out, followed by declarations and Further Assessments by Central Bedfordshire Council.</p> <p>Two new narrow congested streets with a traffic flow of over 5000 vehicles per day identified. CBC will review these areas (Bedford Street and Dunstable Street, Ampthill) and carry out a Detailed Assessment if necessary.</p> <p>The major source of pollution in the district is from road transportation as Stewartby Brickworks have now closed.</p>
CBC	Air Quality Revocation Order	2009	<p>Since the closure of the Stewartby Brickworks (early 2008) the ambient levels of SO<sub>2</sub> have dropped off dramatically. The data from the Marston Vale Forest Centre indicates that the peaks do not rise above 40 mg/m<sup>3</sup> as a 15 minute average, clearly below the objective level. Additionally, both the 1hour mean and 24hour mean SO<sub>2</sub> objectives continue to be met across the Hertfordshire and Bedfordshire monitoring network. AMQA revoked due to closure of the Brickworks.</p>
CBC	Detailed Assessment 2010 (Ampthill)	2011	<p>Recommended to declare AQMA on basis of NO<sub>2</sub> diffusion tube monitoring along Bedford Street (by Park Street junction) and Dunstable Street (adj no 103); to clarify areas of relevant exposure and to continue monitoring.</p>
CBC	Progress Report	2011	<p>Updating on changes since last R&amp;A report</p>
CBC	USA	2012	<p>Reported that a Public Inquiry for the M1 – A5 link road (Dunstable Northern bypass) would proceed.</p>
CBC	Progress Report	2013	<p>To work towards declaring two AQMAs in Ampthill (NO<sub>2</sub> annual) and Sandy (NO<sub>2</sub> annual and hourly). Work on AQMA declaration at Chalton ceased due as approved development is to proceed removing receptors.</p>
CBC	Progress Report	2014	<p>Working towards declaring two AQMAs (Ampthill &amp; Sandy) relating to exceedences of the annual &amp; hourly NO<sub>2</sub> objectives.</p>

SBDC – South Beds District Council; MBDC – Mid Beds District Council (pre April 2009); CBC - Central Bedfordshire Council (post 1<sup>st</sup> April 2009)

**Figure 1.1 Map(s) of AQMA Boundaries (if applicable)**

A map of the existing AQMA in Dunstable is shown below.





**Figure 1.2 Map(s) of AQMA Boundaries (if applicable)**

A map of the Ampthill Air Quality Management Area is below

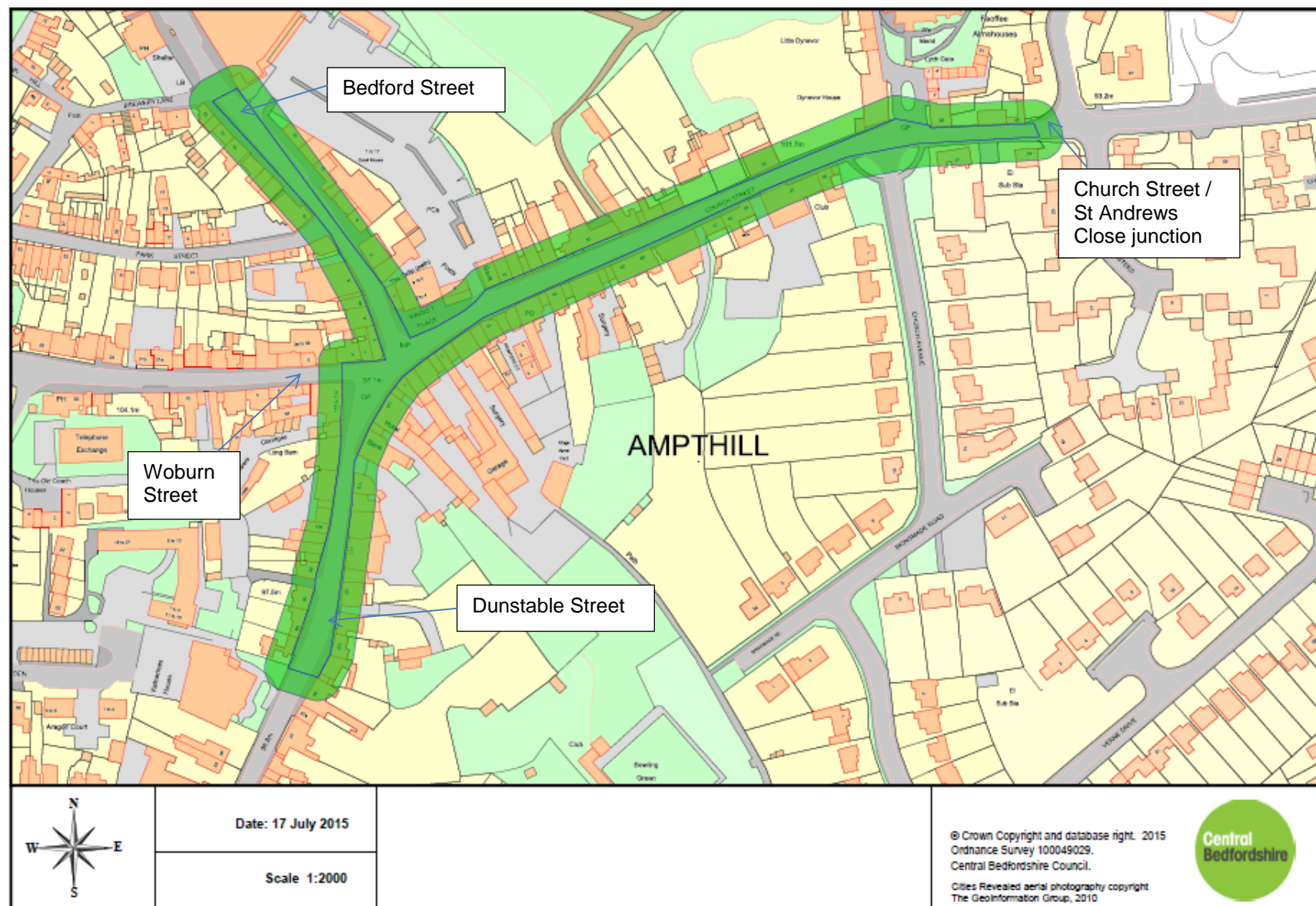
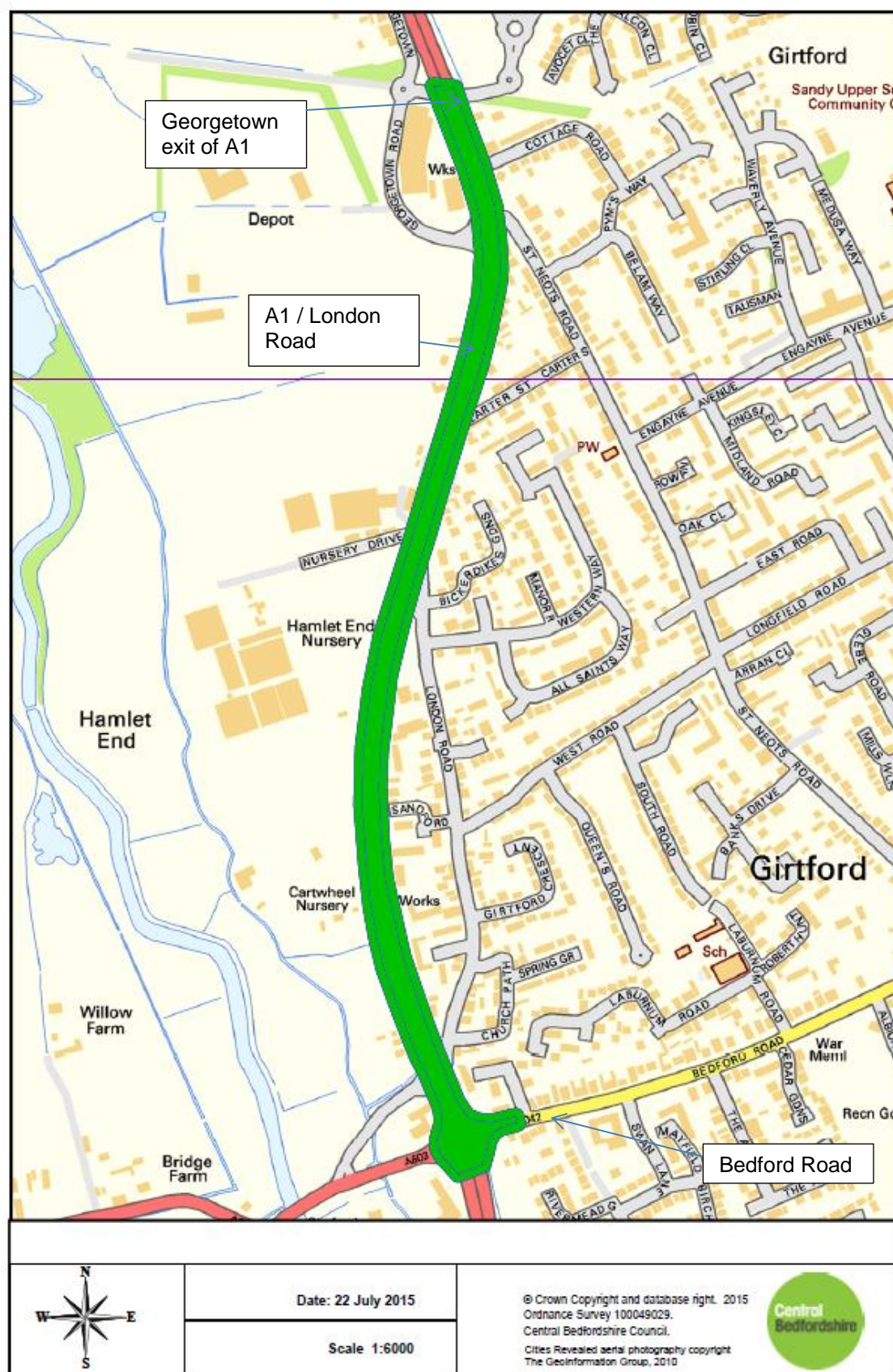


Figure 1.3 Map(s) of AQMA Boundaries (if applicable)

A map of the Sandy Air Quality Management Area is below



## **2 New Monitoring Data**

### **2.1 Summary of Monitoring Undertaken**

#### **2.1.1 Automatic Monitoring Sites**

This section provides a summary of the automatic air quality monitoring results available since the last air quality report (Progress Report 2014).

The Sandy site (MD3) became an affiliated site in the AURN National Network in January 2009, which resulted in an FDMS upgrade to the PM<sub>10</sub> TEOM and also the installation of a PM<sub>2.5</sub> FDMS TEOM.

NO<sub>2</sub> is measured using an API chemiluminescent NO<sub>x</sub> analyser which is housed in an air conditioned cabin. Data is collected remotely using a GSM modem link. The analyser is serviced every six months by We Care 4 Air and is visited every two weeks by a council officer who calibrates it using bottled gas of a known concentration and the results are logged. Since the affiliation of the Sandy site with Defra's national network, an audit is to be undertaken every 6 months.

The data from the AQMS site at Sandy roadside is ratified by ERG to the AURN standard and QA/QC visits are carried out by AEA-Ricardo on a regular basis.

During 2014 data capture for the Sandy site for NO<sub>2</sub> was 84%, PM<sub>10</sub> was 30% and PM<sub>2.5</sub> was 74%.

Figure 2.1 below, shows a map of the location of the realtime analyser.



Figure 2.1 Map(s) of Automatic Monitoring Sites (if applicable)

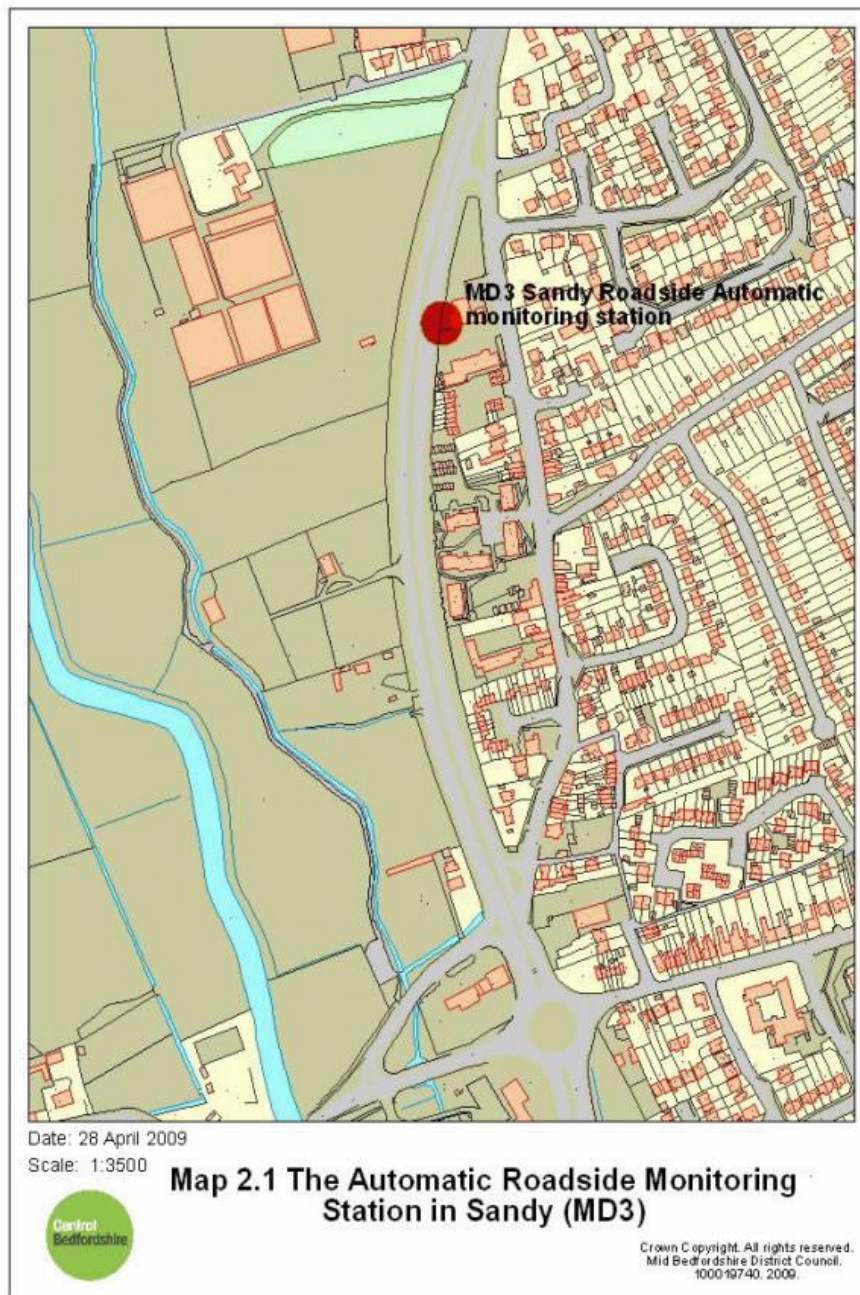




Table 2.1 Details of Automatic Monitoring Sites

Site Name	Site Type	X OS Grid Ref	Y OS Grid Ref	Pollutants Monitored	In AQMA?	Monitoring Technique	Relevant Exposure? (Y/N with distance (m) to relevant exposure)	Distance to kerb of nearest road (N/A if not applicable)	Does this location represent worst-case exposure?
MD3	Road side	516436	249600	NO <sub>2</sub> / PM <sub>10</sub> / PM <sub>2.5</sub>	Y	Chemiluminescence / FDMS TEOM	N	2m	N

### 2.1.2 Non-Automatic Monitoring Sites

In addition to the continuous monitor, Central Bedfordshire Council measures nitrogen dioxide using 45 passive diffusion tubes at sites throughout the district. The locations of the non-automatic monitoring sites can be seen in Appendix B.

The tubes are supplied and analysed by Gradko International Ltd and prepared using 20% TEA in water methodology. Gradko International is a UKAS accredited laboratory and the latest results from the laboratory precision and WASP scheme are in Appendix A.

Table 2.2 shows the details of Non-Automatic Monitoring Sites (NO<sub>2</sub>) measured at sites in 2012. Three tubes have been co-located with the air quality monitoring station on the A1 Sandy since January 2003 to enable a local bias adjustment factor to be calculated.

The national bias adjustment factor for 2014 is 0.91

The national bias adjustment factor is available for Gradko 20% TEA in water tubes from <http://laqm.defra.gov.uk/bias-adjustment-factors/national-bias.html> and was obtained in March 2014.

The local bias adjustment factor is 0.86

The local bias adjustment was calculated using <http://laqm.defra.gov.uk/bias-adjustment-factors/local-bias.html>

The National Bias Adjustment factor has been used, as this gives a more conservative outcome and additionally best represented most of the NO<sub>2</sub> sites locations within the district.

Table 2.2 Details of Non-Automatic Monitoring Sites

Site ID	Site Name	Site Type	X OS Grid Ref	Y OS Grid Ref	Pollutants Monitored	In AQMA?	Is monitoring collocated with a Continuous Analyser (Y/N)	Relevant Exposure? (Y/N with distance (m) to relevant exposure)	Distance to kerb of nearest road (N/A if not applicable)	Does this location represent worst-case exposure?
N1	A1 Sandy	Kerbside	516485	249202	NO <sub>2</sub>	Y	N	Y (3m)	1m	N
N2	Rose Lane B'wade	Kerbside	519163	244654	NO <sub>2</sub>	N	N	Y(4)	1	N
N3	High St B'wade	Kerbside	518995	244594	NO <sub>2</sub>	N	N	N	1	N
N4	A1 Beeston	Kerbside	517160	248190	NO <sub>2</sub>	N	N	Y(2)	1	Y
N6	Bedford Rd Sandy	Kerbside	516621	249100	NO <sub>2</sub>	Y	N	Y(4)	1	N
N7	Highfield Cres Brogborough	Kerbside	496334	238297	NO <sub>2</sub>	N	N	Y(10)	3	N
N20	A1 Carter Lane Sandy	Kerbside	516534	249974	NO <sub>2</sub>	Y	N	Y	1	Y
N9	A1 Hunts Car Co 1Sandy	Kerbside	516451	249692	NO <sub>2</sub>	Y	N	N	1	N
N10	A1 Hunts Car Co 2Sandy	Kerbside	516480	249695	NO <sub>2</sub>		N	Y(4)	2	N
N24	Market Sq Sandy	Kerbside	517310	249228	NO <sub>2</sub>	N	N	Y(3)	1	N
N12	NOx Co loc 1	Kerbside	516434	249603	NO <sub>2</sub>	Y	Y	N	3	N
N13	NOx Co loc 2	Kerbside	516434	249603	NO <sub>2</sub>	Y	Y	N	3	N
N14	NOx Co loc 3	Kerbside	516434	249603	NO <sub>2</sub>	Y	Y	N	3	N
N15	Battlesden	RB	495944	229191	NO <sub>2</sub>	N	N	N	1	N
N16	Bedford Rd Sandy	Kerbside	516593	249083	NO <sub>2</sub>	Y	N	Y	3	N
N17	Bedford Rd Sandy	Kerbside	516569	249074	NO <sub>2</sub>	Y	N	Y(3)	1	Y
N18	Eddies Cott	Kerbside	516579	249070		Y	N	Y	5	Y
N19	McMurdo Ct	Kerbside	516524	249139	NO <sub>2</sub>		N	Y	11	N

Central Bedfordshire Council

Site ID	Site Name	Site Type	X OS Grid Ref	Y OS Grid Ref	Pollutants Monitored	In AQMA?	Is monitoring collocated with a Continuous Analyser (Y/N)	Relevant Exposure? (Y/N with distance (m) to relevant exposure)	Distance to kerb of nearest road (N/A if not applicable)	Does this location represent worst-case exposure?
N21	Amphill 1	Kerbside	503444	238197	NO <sub>2</sub>	Y	N	Y	2	N
N22	Amphill 2	Kerbside	503466	238141	NO <sub>2</sub>	Y	N	Y(2)	1	Y
N23	Amphill 3	Kerbside	503458	283039	NO <sub>2</sub>	Y	N	Y(2)	1	Y
N25	A1 Akbar Sandy	Kerbside	516568	250174	NO <sub>2</sub>	Y	N	N	1	Y
N26	Woburn	Kerbside	494900	233230	NO <sub>2</sub>	N	N	Y(2)	1	Y
1	High St South D'ble	Kerbside	501936	221833	NO <sub>2</sub>	Y	N	N	1	Y
3	Mardale D'ble	Kerbside	502029	220688	NO <sub>2</sub>	N	N	Y(3)	1	N
5	Rowley Linslade	Kerbside	491000	225788	NO <sub>2</sub>	N	N	Y(3)	1	N
6	Barton	Kerbside	508062	230874	NO <sub>2</sub>	N	N	Y(5)	1	N
7	Slip End	Kerbside	507698	218376	NO <sub>2</sub>	N	N	Y(3)	1	N
10	Houghton Regis	Kerbside	501991	223965	NO <sub>2</sub>	N	N	N	1	N
13	Tebworth	RB	499542	226940	NO <sub>2</sub>	N	N	N	8	N
14	Sallowsprings	Rural background	500525	218840	NO <sub>2</sub>	N	N	N	8	N
17	London/Mayfield D'ble	Kerbside	502848	220829	NO <sub>2</sub>	N	N	Y(5)	2	Y
18	Argos D'ble	Kerbside	501705	222089	NO <sub>2</sub>	Y	N	N	1	Y
21	Frenchs Ave D'ble	Kerbside	500790	223047	NO <sub>2</sub>	N	N	Y(4)	2	Y
26	West St D'ble	Kerbside	501571	221742	NO <sub>2</sub>	N	N	Y(5)	1	N
27	Luton Rd D'ble	Kerbside	503214	222123	NO <sub>2</sub>	Y	N	Y(2)	1	Y
28	Chalton	Kerbside	503763	226103	NO <sub>2</sub>	N	N	N	1	N
33	Church St D'ble	Kerbside	501962	221884	NO <sub>2</sub>	Y	N	Y	3	Y
34	High St South D'ble	Kerbside	501911	221853	NO <sub>2</sub>	Y	N	Y(5)	1	Y

**Central Bedfordshire Council**

<b>Site ID</b>	<b>Site Name</b>	<b>Site Type</b>	<b>X OS Grid Ref</b>	<b>Y OS Grid Ref</b>	<b>Pollutants Monitored</b>	<b>In AQMA?</b>	<b>Is monitoring collocated with a Continuous Analyser (Y/N)</b>	<b>Relevant Exposure? (Y/N with distance (m) to relevant exposure)</b>	<b>Distance to kerb of nearest road (N/A if not applicable)</b>	<b>Does this location represent worst-case exposure?</b>
35	Flint Ct D'ble	Kerbside	501504	222278	NO <sub>2</sub>	N	N	Y	3	Y
36	Luton Rd D'ble	Kerbside	503849	222326	NO <sub>2</sub>	Y	N	Y(2)	1	Y
37	Luton Rd D'ble	Kerbside	502838	222071	NO <sub>2</sub>	Y	N	Y(3)	1	Y
39	Houghton Rd D'ble	Kerbside	501151	222821	NO <sub>2</sub>	N	N	Y(3)	1	Y
41	Chalton X	Kerbside	503925	225855	NO <sub>2</sub>	N	N	Y	6	Y
48	Poytners Rd D'ble	Kerbside	503745	222914	NO <sub>2</sub>	N	N	Y(4)	1	Y
49	Poynters Rd D'ble	Kerbside	503569	223034	NO <sub>2</sub>	N	N	Y(6)	1	Y
50	Luton Road D'ble	Kerbside	502813	222065	NO <sub>2</sub>	Y	N	Y(6)	2	Y
51	Busway D'ble	Kerbside	503481	221866	NO <sub>2</sub>	N	N	Y(8)	2	Y
52	Hockliffe St Leighton Buzzard	Kerbside	492512	225235	NO <sub>2</sub>	N	N	Y(2)	1	Y

## **2.2 Comparison of Monitoring Results with Air Quality Objectives**

### **2.2.1 Nitrogen Dioxide**

#### **Automatic Monitoring Data**

As can be seen from Table 2.3 (Results of Automatic Monitoring for Nitrogen Dioxide: Comparison with Annual Mean Objective), the Sandy site recorded an annual mean concentration of NO<sub>2</sub> over the air quality objective level (44µg/m<sup>3</sup>) in 2009. However there have been no exceedance's at this location in the years since.

Table 2.4 (Results of Automatic Monitoring for Nitrogen Dioxide: Comparison with 1-hour mean objective) also shows that concentrations were within the objective level.

**Table 2.3 Results of Automatic Monitoring of Nitrogen Dioxide: Comparison with Annual Mean Objective**

Site ID	Site Type	Within AQMA?	Valid Data Capture for period of monitoring % <sup>a</sup>	Valid Data Capture 2014 % <sup>b</sup>	Annual Mean Concentration $\mu\text{g}/\text{m}^3$				
					2010* <sup>c</sup>	2011* <sup>c</sup>	2012* <sup>c</sup>	2013* <sup>c</sup>	2014 <sup>c</sup>
MD3	Roadside	Y	84	84	38	35	35	31	27.94 <sup>c</sup>

<sup>a</sup> i.e. data capture for the monitoring period, in cases where monitoring was only carried out for part of the year.

<sup>b</sup> i.e. data capture for the full calendar year (e.g. if monitoring was carried out for six months the maximum data capture for the full calendar year would be 50%).

<sup>c</sup> Means should be “annualised” as in Box 3.2 of TG(09), if monitoring was not carried out for the full year.

\*Annual mean concentrations for previous years are optional.

**Due to the data capture of the site being below 90% the 2014 annual mean figure has been annualised. Calculations can be seen in Appendix A**

**Table 2.4 Results of Automatic Monitoring for Nitrogen Dioxide: Comparison with 1-hour mean Objective**

Site ID	Site Type	Within AQMA?	Valid Data Capture for period of monitoring % <sup>a</sup>	Valid Data Capture 2014 % <sup>b</sup>	Number of Exceedences of Hourly Mean (200 µg/m <sup>3</sup> )				
					2010* <sup>c</sup>	2011* <sup>c</sup>	2012* <sup>c</sup>	2013* <sup>c</sup>	2014 <sup>c</sup>
MD3	Roadside	Y	84	84	1(216)	0	0	0	0 (113)

<sup>a</sup> i.e. data capture for the monitoring period, in cases where monitoring was only carried out for part of the year.

<sup>b</sup> i.e. data capture for the full calendar year (e.g. if monitoring was carried out for six months the maximum data capture for the full calendar year would be 50%).

<sup>c</sup> If the period of valid data is less than 90%, include the 99.8<sup>th</sup> percentile of hourly means in brackets

\*Number of exceedences for previous years are optional.

**As data capture was below 90% the 99.8<sup>th</sup> percentile of hourly means is shown in brackets for the 2014 data.**



## Diffusion Tube Monitoring Data

In addition to the continuous monitors, Central Bedfordshire Council measures nitrogen dioxide using passive diffusion tubes at sites throughout the district. The locations of the monitoring sites can be seen in Appendix B. Monthly results are in Appendix C.

The tubes are supplied and analysed by Gradko International Ltd and prepared using 20% TEA in water methodology. Gradko International is a UKAS accredited laboratory and was considered 'Good' in the latest results from the laboratory precision and WASP scheme. See Appendix A

Table 2.5 shows the details of Non-Automatic Monitoring Sites (NO<sub>2</sub>) measured at sites in 2014. Three tubes have been co-located with the air quality monitoring station on the A1 Sandy since January 2003 to enable a local bias adjustment factor to be calculated. Several sites had low data capture rates and so have been annualised. In addition sites have had a distance correction factor applied where appropriate to calculate the drop off in pollution from the source to the receptor. This has been done in accordance with the methodology in Defra's Local Air Quality Management Technical Guidance (LAQM TG.09) published in February 2009. Calculations can be seen in Appendix A

Table 2.6 shows monitoring results from 2010 to 2014 .

## Hourly objective

As a result of a review of nitrogen dioxide diffusion tube sites in 2010 – a new site was set up on the façade of a row of terraced houses alongside the A1 in Sandy approximately 1 metre from the carriageway. The annual mean result concentration of the tube was 74.15µg/m<sup>3</sup> (with national bias adjustment factor 0.91 applied). This indicates that there is a breach of the hourly objective at this location which falls within the AQMA for Sandy. A map of this site can be seen in Appendix B.

A new diffusion tube monitoring site has been introduced to the network following discussions with Highways England. The new tube is in Carter Street, Sandy, this is outside of the boundary of the Air Quality Management Area and will be used to indicate if the high levels NO<sub>2</sub> at the facades of the cottages affect the wider area. Unfortunately the new site is some distance away from the A1 (due to restrictions in suitable receptacles).

Table 2.5 Results of Nitrogen Dioxide Diffusion Tubes in 2014

Site ID	Location	Site Type	Within AQMA?	Triplicate or Collocated Tube	Data Capture 2014 (Number of Months or %)	Data with less than 9 months has been annualised (Y/N)	Confirm if data has been distance corrected (Y/N)	Annual mean concentration (Bias Adjustment factor = 0.91)
								2014 ( $\mu\text{g}/\text{m}^3$ )
N1	A1 Sandy	K	Y	N	10	-	Y	33.7
N2	Rose Lane Biggleswade	K	N	N	10	-	N	27.31
N3	High St Biggleswade	K	N	N	10	-	N	34.98
N4	Beeston	K	N	N	10	-	N	35.47
N6	Bedford Rd Sandy	K	Y	Y	10	-	N	35.38
N7	Brogborough	K	N	N	10	-	N	26.15
N20	A1 Carters Sandy	K	Y	N	10	-	No drop off	<b>74.15</b>
N9	Hunts Car Co 1 Sandy	K	Y	N	10	-	N	39.46
N10	Hunts Car Co 2 Sandy	K	Y	N	10	-	N	24.59
N24	Market Sq Sandy	K	N	N	6	Y	N	34.87
N12	NOx co location 1	K	Y	Triplicate & Co-located	10	-	N	31.41
N13	NOx co location 2	K	Y	Triplicate & Co-located	10	-	N	32.92
N14	NOx co location 3	K	Y	Triplicate & Co-located	10	-	N	33.30
N15	Battlesden	RB	N	N	10	-	N	13.08

Central Bedfordshire Council

Site ID	Location	Site Type	Within AQMA?	Triplicate or Collocated Tube	Data Capture 2014 (Number of Months or %)	Data with less than 9 months has been annualised (Y/N)	Confirm if data has been distance corrected (Y/N)	Annual mean concentration (Bias Adjustment factor = 0.91)
								2014 ( $\mu\text{g}/\text{m}^3$ )
N16	Bedford Rd Sandy	K	Y	N	10	-	Y	31.5
N17	Bedford Rd Sandy	K	Y	N	10	-	Y	37.8
N18	Eddies Cott Sandy	K	Y	N	9	Y	N	29.92
N19	McMurdo Sandy	K	Y	N	10	-	N	27.43
N21	Ampthill 1	K	Y	N	9	Y	N	26.97
N22	Ampthill 2	K	Y	N	10	-	No drop off	42.25
N23	Ampthill 3	K	Y	N	10	-	No drop off	47.71
1	HSS D'ble	K	Y	N	7	Y	N	38.75
3	Mardale D'ble	K	N	N	10	-	N	14.50
5	Rowley Linslade	K	N	N	10	-	N	14.65
6	Barton	K	N	N	8	Y	N	20.42
7	Slip End	K	N	N	10	-	N	17.72
10	Houghton Regis	K	N	N	7	Y	Y	33.9
13	Tebworth	RB	N	N	9	Y	N	19.36
14	Sallowsprings	RB	N	N	10	-	N	11.99
17	London/Mayfield	K	N	N	10	-	N	32.31
18	Argos	K	Y	N	6	Y	No exposure	55.18
21	Frenchs D'ble	K	N	N	8	Y	N	27.11
26	West St D'ble	K	N	N	6	Y	N	27.47
27	Luton Rd	K	Y	N	9	Y	N	32.16
28	Chalton	K	N	N	10	-	No exposure	48.39
33	Church St D'ble	K	Y	N	10	-	N	39.03

Central Bedfordshire Council

Site ID	Location	Site Type	Within AQMA?	Triplicate or Collocated Tube	Data Capture 2014 (Number of Months or %)	Data with less than 9 months has been annualised (Y/N)	Confirm if data has been distance corrected (Y/N)	Annual mean concentration (Bias Adjustment factor = 0.91)
								2014 ( $\mu\text{g}/\text{m}^3$ )
34	HSS D'ble	K	Y	N	6	Y	Y	30.4
35	Flint Ct D'ble	K	N	N	9	Y	N	33.22
36	Luton Rd D'ble	K	Y	N	7	Y	Y	41.2
37	Luton Rd D'ble	K	Y	N	9	Y	Y	35.2
39	Houghton Rd	K	N	N	9	Y	N	32.91
41	Chalton X	K	N	N	8	Y	N	37.20
48	Poynters Rd	K	N	N	9	Y	N	34.45
49	Poynters Rd	K	N	N	10	-	N	36.56
50	Luton Rd	K	Y	N	8	Y	Y	37.2
51	Busway	K	N	N	4	Y	N	24.89

Table 2.6 Results of Nitrogen Dioxide Diffusion Tubes (2010 to 2014)

Site ID	Site Type	Within AQMA?	Annual mean concentration (adjusted for bias & distance corrected where appropriate) $\mu\text{g}/\text{m}^3$				
			2010* (Bias Adjustment Factor = 0.92)	2011* (Bias Adjustment Factor = 0.89)	2012* (Bias Adjustment Factor = 0.97)	2013* (Bias Adjustment Factor = 0.95)	2014 (Bias Adjustment Factor = 0.91)
N1	A1 Sandy	Y	39.3	37.1	35.5	32.4	33.7
N2	Rose Lane Biggleswade	N	27	27.09	29.78	25.60	27.31
N3	High St Biggleswade	N	42	37.50	38.45	37.10	34.98
N4	Beeston	N	37.8	35.28	38.27	31.5	35.47
N6	Bedford Rd Sandy	Y	33.6	38.13	36.56	35.54	35.38
N7	Brogborough	N	35	25.65	26.76	26.93	26.15
N20	A1 Carters Sandy	Y	-	74.62	80.45	80.39	<b>74.15</b>
N9	Hunts Car Co 1 Sandy	Y	46	39.7	33.8	31.1	39.46
N10	Hunts Car Co 2 Sandy	Y	30	26.9	27.10	27.78	24.59
N24	Market Sq Sandy	N	35.42	28.4	35.08	31.36	34.87
N12	NOx co location 1	Y	37	33.22	35.18	32.6	31.41
N13	NOx co location 2	Y	39	32.91	33.44	33	32.92
N14	NOx co location 3	Y	37	33.36	33.15	32.9	33.30
N15	Battlesden	N	15	12.75	13.47	13.31	13.08
N16	Bedford Rd Sandy	Y	30.7	33.73	34.40	35.49	31.5

Central Bedfordshire Council

Site ID	Site Type	Within AQMA?	Annual mean concentration (adjusted for bias & distance corrected where appropriate) $\mu\text{g}/\text{m}^3$				
			2010* (Bias Adjustment Factor = 0.92)	2011* (Bias Adjustment Factor = 0.89)	2012* (Bias Adjustment Factor = 0.97)	2013* (Bias Adjustment Factor = 0.95)	2014 (Bias Adjustment Factor = 0.91)
N17	Bedford Rd Sandy	Y	33.7	41.65	35.6	36.1	37.8
N18	Eddies Cott Sandy	Y	36	33.48	35.61	28.58	29.92
N19	McMurdo Sandy	Y	38.9	43.14	39.7	24.67	27.43
N21	Ampthill 1	Y	30.73	24.45	26.57	27.14	26.97
N22	Ampthill 2	Y	50.99	39.84	40.69	41.03	42.25
N23	Ampthill 3	Y	53.32	47.35	47.07	43.34	47.71
1	HSS D'ble	Y	49.58	45	43.32	44.80	38.75
3	Mardale D'ble	N	20.53	13.70	14.87	15.14	14.50
5	Rowley Linslade	N	14.90	12.78	12.82	13.87	14.65
6	Barton	N	26.11	22.86	22.56	24.28	20.42
7	Slip End	N	22.29	17.84	16.38	18.62	17.72
10	Houghton Regis	N	32.01	31.66	33.38	33.25	33.9
13	Tebworth	N	13.74	12.92	16.66	12.76	19.36
14	Sallowsprings	N	15.06	10.41	11.17	10.79	11.99
17	London/Mayfield	N	38.70	31.80	33.20	32.13	32.31
18	Argos	Y	46.19	40.58	38.91	43.73	55.18
21	Frenchs D'ble	N	35.55	33.22	30.94	27.68	27.11
26	West St D'ble	N	33.37	29.94	26.29	28.25	27.47
27	Luton Rd	Y	39.29	31.98	32.84	33.5	32.16
28	Chalton	N	48.89	45.84	53.72	49.31	48.39
33	Church St D'ble	Y	41.9	39.4	39.2	35.01	39.03
34	HSS D'ble	Y	38.1	32	36.7	36.1	30.4
35	Flint Ct D'ble	N	31.1	35.24	34.97	32.81	33.22
36	Luton Rd D'ble	Y	37.4	37.41	35.52	36.4	41.2
37	Luton Rd D'ble	Y	41.6	36.7	38.3	41.4	35.2

Central Bedfordshire Council

Site ID	Site Type	Within AQMA?	Annual mean concentration (adjusted for bias & distance corrected where appropriate) $\mu\text{g}/\text{m}^3$				
			2010* (Bias Adjustment Factor = 0.92)	2011* (Bias Adjustment Factor = 0.89)	2012* (Bias Adjustment Factor = 0.97)	2013* (Bias Adjustment Factor = 0.95)	2014 (Bias Adjustment Factor = 0.91)
39	Houghton Rd	N	35.1	35.76	38.33	31.3	32.91
41	Chalton X	N	43.46	40.51	40.80	37.32	37.20
48	Poynters Rd	N	-	-	-	32.43	34.45
49	Poynters Rd	N	-	-	-	32.48	36.56
50	Luton Rd	Y	-	-	-	35.8a	37.2
51	Busway	N	-	-	-	-	24.89

\*Optional

### 2.2.2 PM<sub>10</sub>

As illustrated in the tables below, the monitoring results for the annual mean and 24hour mean objectives indicate that neither is in danger of being exceeded. The Sandy site is affiliated to the AURN network and therefore the data from the TEOM does not require adjustment in line with the VCM<sup>1</sup>.

As with the NO<sub>2</sub> analyser the location is representative of public exposure at certain locations along the A1, however, some residential properties are closer to the road (although standing traffic doesn't occur as much at these locations) and some properties are more distant from the road. This section of the A1 was the subject of a Detailed Assessment in 2008 which included PM<sub>10</sub>. It found that PM<sub>10</sub> levels did not threaten either objective, a conclusion that has been confirmed by subsequent monitoring data.

---

<sup>1</sup> King's College ERG have developed a model to correct TEOM concentrations to "gravimetric equivalent" values, based on the purge concentrations measured by FDMS analysers. To assist local authorities with the Volatile Correction Model, ERG has developed a web portal that will allow the correction algorithms to be automatically applied.



**Table 2.7 Results of Automatic Monitoring of PM<sub>10</sub>: Comparison with Annual Mean Objective**

Site ID	Site Type	Within AQMA?	Valid Data Capture for monitoring Period % <sup>a</sup>	Valid Data Capture 2014 % <sup>b</sup>	Confirm Gravimetric Equivalent (Y or NA)	Annual Mean Concentration µg/m <sup>3</sup>				
						2010* <sup>c</sup>	2011* <sup>c</sup>	2012* <sup>c</sup>	2013* <sup>c</sup>	2014 <sup>c</sup>
MD3	Roadside	Y		30	Y	21	17	19	20	17.21c

<sup>a</sup> i.e. data capture for the monitoring period, in cases where monitoring was only carried out for part of the year.

<sup>b</sup> i.e. data capture for the full calendar year (e.g. if monitoring was carried out for six months the maximum data capture for the full calendar year would be 50%).

<sup>c</sup> Means should be “annualised” as in Box 3.2 of TG(09), if monitoring was not carried out for the full year.

\* Optional

**2014 result has been annualised – see Appendix A**

**Table 2.8 Results of Automatic Monitoring for PM<sub>10</sub>: Comparison with 24-hour mean Objective**

Site ID	Site Type	Within AQMA?	Valid Data Capture for monitoring Period % <sup>a</sup>	Valid Data Capture 2014 % <sup>b</sup>	Confirm Gravimetric Equivalent	Number of Exceedences of 24-Hour Mean (50 µg/m <sup>3</sup> )				
						2010* <sup>c</sup>	2011* <sup>c</sup>	2012* <sup>c</sup>	2013* <sup>c</sup>	2014 <sup>c</sup>
A1	Roadside	Y	95	92	Y	3	4	8	6	1 (27)

<sup>a</sup> i.e. data capture for the monitoring period, in cases where monitoring was only carried out for part of the year.

<sup>b</sup> i.e. data capture for the full calendar year (e.g. if monitoring was carried out for six months the maximum data capture for the full calendar year would be 50%).

<sup>c</sup> if data capture is less than 90%, include the 90<sup>th</sup> percentile of 24-hour means in brackets

\* Optional

**Results have been annualised and show the 90<sup>th</sup> percentile in brackets for 2014**

### 2.2.3 Sulphur Dioxide

A Detailed Assessment conducted in 2004, along with monitoring results, indicated that sulphur dioxide levels were exceeding the 15minute mean objective. As a result an Air Quality Management Area was declared with regard to sulphur dioxide emissions from Stewartby Brickworks.

Production stopped at the brickworks from the 28th February 2008; although the process did continue for a few weeks after that date, due to the inherent nature of the production method (fires in the kilns continued after the input of the final batch of the green bricks until the process was complete and the fires went out).

Monitoring continued for a period of time after the closure of the brickworks and showed that SO<sub>2</sub> concentrations met the air quality objectives. The realtime analyser ceased monitoring for SO<sub>2</sub> in April 2009. Additionally the realtime monitor operated by Bedford Borough Council decommissioned their monitoring station in February 2009.

Subsequently the AQMAs relating to the emissions from the brickworks have been revoked.

Central Bedfordshire Council is currently carrying out no sulphur dioxide monitoring within the district.

## 2.2.4 Benzene

There are no continuous benzene analysers in Hertfordshire or Bedfordshire as previous rounds of review and assessment showed that the objective is likely to have been met in all locations.

## 2.2.5 Other pollutants monitored

### 2.2.5i Ozone (O<sub>3</sub>)

The Government has set an air quality objective for ground level ozone but, as it is a national and international problem rather than a local one, it is not included in environmental legislation. This means that local authorities are not required to take action to specifically decrease ground level ozone levels.

The sun shining on polluted air, which contains nitrogen dioxide and volatile organic compounds, produces ozone. Given that strong sunshine is essential in the formation of ozone, the pollutant is, in the main, a summertime problem.

Ozone concentrations tend to be highest in rural locations. This is due to ozone being used by other pollutants in photochemical reactions and as such ozone levels will be decreased in urban situations where traffic or industrial pollutants tend to be higher.

Table 2.2.5 The National Air Quality Standards and Objectives for ground level ozone			
Pollutant	Air Quality Objective		Date to be achieved by
	Concentration	Measured as	
Ozone (O <sub>3</sub> )	100 µg/m <sup>3</sup> (50 ppb)	Running 8 hour mean daily maximum of running 8hr mean not to be exceeded more than 10 times per year	31/12/2005

Monitoring results indicate that all parts of Hertfordshire and Bedfordshire will have failed to achieve this objective.

Unlike all of the other pollutants, ozone (O<sub>3</sub>) concentrations across the network have seen a steady increase over the last 10 years and this helps to indicate why the reduction in NO<sub>x</sub> is not being directly translated into a similar reduction in NO<sub>2</sub>. Ozone levels are highly dependent on the weather and a series of warm sunny summer periods can cause a sharp increase in mean levels. Furthermore, a large proportion of the ozone experienced in Hertfordshire and Bedfordshire is transported from continental Europe during easterly and southerly winds.

The realtime analyser in Marston Moretaine showed the number of days where the running 8hour mean of 100 µg/m<sup>3</sup> exceeded the objective level in both 2011 (36 days) and 2012 (23 days). In 2013 the monitor showed that there were 43 days which exceeded the objective, before it was decommissioned in August (2013). Central Bedfordshire Council now no longer monitors Ozone.

The pattern of rising ozone levels is common across the UK. There are a number of possible reasons why, despite falling NO<sub>x</sub> concentrations. Climate change may be causing more hours of sunlight and higher temperatures helping to drive the reaction that forms ozone.

Ozone 'precursors', such as hydrocarbons and secondary particulate compounds emitted by both vehicles and industrial processes, may be increasing. It is even possible that emission control technologies such as particle traps fitted to diesel vehicles are upsetting the balance between NO and NO<sub>x</sub>. As ozone is a transboundary pollutant, which can travel hundreds or even thousands of miles, the reasons and possible solutions, have to be sought within and outside the borders of the UK.

### **2.2.5ii PM<sub>2.5</sub>**

Currently PM<sub>2.5</sub> objectives are not included in regulations.

However as part of the AURN site in Sandy PM<sub>2.5</sub> is monitored – during 2014 a 74% data capture was achieved and an annual mean of 12µg/m<sup>3</sup> calculated.

### **Summary of Compliance with AQS Objectives**

Central Bedfordshire Council has examined the results from monitoring in the district. Concentrations outside of the AQMAs are all below the objectives at relevant locations, therefore there is no need to proceed to a Detailed Assessment.

### 3 Road Traffic Sources

Within Central Bedfordshire there have been no changes to:

- Busy streets where people may spend one hour or more close to traffic
- Roads with a high flow of buses and/or HGVs
- Junctions
- New roads constructed or proposed since the last round of Review and Assessment
- Roads with significantly changed traffic flows
- Bus or coach stations

#### 3.1 Narrow Congested Streets with Residential Properties Close to the Kerb

Central Bedfordshire Council confirms that there are no new/newly identified congested streets with a flow above 5,000 vehicles per day and residential properties close to the kerb, that have not been adequately considered in previous rounds of Review and Assessment.

#### 3.2 Busy Streets Where People May Spend 1-hour or More Close to Traffic

Central Bedfordshire Council confirms that there are no new/newly identified busy streets where people may spend 1 hour or more close to traffic.

#### 3.3 Roads with a High Flow of Buses and/or HGVs.

Central Bedfordshire Council confirms that there are no new/newly identified roads with high flows of buses/HDVs.

### **3.4 Junctions**

Central Bedfordshire Council confirms that there are no new/newly identified busy junctions/busy roads.

### **3.5 New Roads Constructed or Proposed Since the Last Round of Review and Assessment**

Central Bedfordshire Council confirms that there are no new/proposed roads.

### **3.6 Roads with Significantly Changed Traffic Flows**

Central Bedfordshire Council confirms that there are no new/newly identified roads with significantly changed traffic flows.

### **3.7 Bus and Coach Stations**

Central Bedfordshire Council confirms that there are no relevant bus stations in the Local Authority area.

## 4 Other Transport Sources

### 4.1 Airports

London Luton Airport is situated in a neighbouring authority's district.

Luton Borough Council's 2014 Progress Report (published April 2014) stated "that air quality is monitored within and around the airport site. Currently the airport has 14 NO<sub>2</sub> diffusion tube sites. None of the sites measured an Annual Mean concentration at or above the 40µg/m<sup>3</sup> objective level".

Data from 2009 to 2013 data for Luton Airport can be seen in Appendix D

Central Bedfordshire confirms that there are no airports in the Local Authority area and the one in a neighbouring authority does not impact on air quality in the district.

### 4.2 Railways (Diesel and Steam Trains)

Railways were considered during previous rounds of review and assessment and found they were unlikely to be an issue (not enough periods of idling or relevant exposure). There have been no significant changes to train services or exposures.

The narrow gauge railway at Leighton Buzzard continues to run during school holidays and weekends) using engines which are coal powered. However there have been no changes to the route or scheduled stops, which means that it is highly unlikely that the trains will be stationary for 15 minutes or more and the public would have access to within 15metres (unless they are on the train).

#### 4.2.1 Stationary Trains

Central Bedfordshire Council confirms that there are no locations where diesel or steam trains are regularly stationary for periods of 15 minutes or more, with potential for relevant exposure within 15m.



#### **4.2.2 Moving Trains**

Central Bedfordshire Council confirms that there are no locations with a large number of movements of diesel locomotives, and potential long-term relevant exposure within 30m.

### **4.3 Ports (Shipping)**

Central Bedfordshire Council confirms that there are no ports or shipping that meet the specified criteria within the Local Authority area.

## **5 Industrial Sources**

### **5.1 Industrial Installations**

#### **5.1.1 New or Proposed Installations for which an Air Quality Assessment has been Carried Out**

Central Bedfordshire Council confirms that there are no new or proposed industrial installations for which planning approval has been granted within its area or nearby in a neighbouring authority.

#### **5.1.2 Existing Installations where Emissions have Increased Substantially or New Relevant Exposure has been Introduced**

Central Bedfordshire Council confirms that there are no industrial installations with substantially increased emissions or new relevant exposure in their vicinity within its area or nearby in a neighbouring authority.

#### **5.1.3 New or Significantly Changed Installations with No Previous Air Quality Assessment**

Central Bedfordshire Council confirms that there are no new or proposed industrial installations for which planning approval has been granted within its area or nearby in a neighbouring authority.

### **5.2 Major Fuel (Petrol) Storage Depots**

Central Bedfordshire Council confirms there are no major fuel (petrol) storage depots within its district.

### **5.3 Petrol Stations**

Central Bedfordshire Council confirms that there are no petrol stations meeting the specified criteria.

### **5.4 Poultry Farms**

Central Bedfordshire Council confirms that there are no poultry farms meeting the specified criteria.

## **6 Commercial and Domestic Sources**

### **6.1 Biomass Combustion – Individual Installations**

Central Bedfordshire Council confirms that there are no biomass combustion plant in the Local Authority area.

### **6.2 Biomass Combustion – Combined Impacts**

Central Bedfordshire Council confirms that there are no biomass combustion plant in the Local Authority area.

### **6.3 Domestic Solid-Fuel Burning**

Central Bedfordshire Council confirms that there are no areas of significant domestic fuel use in the Local Authority area.

## 7 Fugitive or Uncontrolled Sources

As reported in the Progress Report 2014, Central Bedfordshire Council received a proposal for a waste incinerator to be erected and operated within the district. Comments have been made with regards to issues surrounding air quality. The decision for approval of the project is pending.

However there are no new landfill sites, quarries, unmade haulage roads on industrial sites, waste transfer stations or other potential sources of fugitive particulate emissions since the last review and assessment.

Central Bedfordshire Council has identified the following potential local developments which may impact on air quality in the Local Authority area.

Proposed waste incinerator at Marston Vale, which is currently being reviewed.

If necessary this will be taken into consideration in future Review and Assessments.

## 8 Conclusions and Proposed Actions

### 8.1 Conclusions from New Monitoring Data

The 2015 Updating and Screening Assessment has not identified a need to progress to a Detailed Assessment for any pollutant.

NO<sub>2</sub> diffusion tube monitoring showed sites that were exceeding the annual/hourly objectives were within one of the three AQMAs. The exception to this was the Chalton (28) site which is near a bridge over the M1 and on a busy B road, relevant exposure

The automatic monitoring showed compliance with the annual and hourly NO<sub>2</sub> objectives and the annual and 24hour PM<sub>10</sub> objectives.

Some changes have been made to monitoring locations – some sites have closed and others introduced: These are

- N7 – Brogborough has been closed as the new A421 has taken much of the traffic of the old road through the village and NO<sub>2</sub> has been shown to be under the objective level.
- 41 – Chalton Cross Cottages this site has been closed as these properties are no longer occupied and demolition is imminent as part of the A5-M1 link road (Dunstable bypass) as reported in previous reports.
- N25 – A1 Sandy has been introduced to ascertain the extent of the exceedance of the hourly NO<sub>2</sub> objective and annual mean.
- N26 – Woburn High Street has been introduced to monitor pollution concentrations outside a school sited on a busy road.
- N27 (Amphill 4) – Church Street, Amphill has been introduced to monitor pollution levels, as public consultation requested the AQMA boundary be extended along this road
- N28 – Carter Street has been introduced to the network to try to ascertain the extent of the exceedance of the hourly NO<sub>2</sub> objective and annual mean.
- 51- Busway (Jeans Way, Dunstable) was introduced as a result of a request from a member of the public living near to the line who was concerned regarding potential pollution.
- 52 – Hockliffe Street, Leighton Buzzard was introduced to monitor levels of pollution alongside a busy and narrow street (but not over 5,000 vehicles per day).

## **8.2 Conclusions from Assessment of Sources**

Potential sources of pollution have been considered during previous rounds of review and assessment and as there have been no changes in circumstances, continue to not to require further assessment.

## **8.3 Proposed Actions**

The AQMAs at Ampthill and Sandy have now been declared (copies of the Orders have been sent to Defra for information). Work will commence to produce a Further Assessment report and an Action Plan to work towards achieving the relevant objectives. Additionally a Progress Report will be submitted to Defra in 2016.

The 2015 Updating and Screening Assessment has not identified a need to progress to a Detailed Assessment for any pollutant.

## 9 References

- Central Bedfordshire Council USA 2012 report
- Central Bedfordshire Council Progress Report 2014
- Central Bedfordshire Council Local Transport Plan 3
- Defra – Local Air Quality Management Technical Guidance (LAQM.TG(09))
- Defra website NO<sub>2</sub> fall off with distance calculator accessed at <http://laqm.defra.gov.uk/tools-monitoring-data/no2-falloff.html>
- Defra website National bias adjustment factor spreadsheet (version 3/15) accessed at <http://laqm.defra.gov.uk/bias-adjustment-factors/national-bias.html>
- Defra website Background maps accessed at <http://laqm.defra.gov.uk/review-and-assessment/tools/background-maps.html>
- Hertfordshire and Bedfordshire Air Quality Monitoring Network accessed at [www.HertsBedsAir.net](http://www.HertsBedsAir.net)



# Appendices

Appendix A: QA/QC Data

Appendix B: Diffusion tube (non-automatic) sites – location plans

Appendix C: Diffusion tube (non-automatic) sites – monthly results

Appendix D: Luton Airport air quality data



NO2 bias adjustment factor Mar 2015 - Microsoft Word

File Home Insert Page Layout References Mailings Review View Nuance PDF Enterprise Connect Format

Calibri (Body) 11 A A+ A- B I U X<sub>2</sub> X<sup>2</sup> A<sup>2</sup> A<sup>3</sup> A<sup>4</sup> A<sup>5</sup> A<sup>6</sup> A<sup>7</sup> A<sup>8</sup> A<sup>9</sup> A<sup>10</sup> A<sup>11</sup> A<sup>12</sup> A<sup>13</sup> A<sup>14</sup> A<sup>15</sup> A<sup>16</sup> A<sup>17</sup> A<sup>18</sup> A<sup>19</sup> A<sup>20</sup> A<sup>21</sup> A<sup>22</sup> A<sup>23</sup> A<sup>24</sup> A<sup>25</sup> A<sup>26</sup> A<sup>27</sup> A<sup>28</sup> A<sup>29</sup> A<sup>30</sup> A<sup>31</sup> A<sup>32</sup> A<sup>33</sup> A<sup>34</sup> A<sup>35</sup> A<sup>36</sup> A<sup>37</sup> A<sup>38</sup> A<sup>39</sup> A<sup>40</sup> A<sup>41</sup> A<sup>42</sup> A<sup>43</sup> A<sup>44</sup> A<sup>45</sup> A<sup>46</sup> A<sup>47</sup> A<sup>48</sup> A<sup>49</sup> A<sup>50</sup> A<sup>51</sup> A<sup>52</sup> A<sup>53</sup> A<sup>54</sup> A<sup>55</sup> A<sup>56</sup> A<sup>57</sup> A<sup>58</sup> A<sup>59</sup> A<sup>60</sup> A<sup>61</sup> A<sup>62</sup> A<sup>63</sup> A<sup>64</sup> A<sup>65</sup> A<sup>66</sup> A<sup>67</sup> A<sup>68</sup> A<sup>69</sup> A<sup>70</sup> A<sup>71</sup> A<sup>72</sup> A<sup>73</sup> A<sup>74</sup> A<sup>75</sup> A<sup>76</sup> A<sup>77</sup> A<sup>78</sup> A<sup>79</sup> A<sup>80</sup> A<sup>81</sup> A<sup>82</sup> A<sup>83</sup> A<sup>84</sup> A<sup>85</sup> A<sup>86</sup> A<sup>87</sup> A<sup>88</sup> A<sup>89</sup> A<sup>90</sup> A<sup>91</sup> A<sup>92</sup> A<sup>93</sup> A<sup>94</sup> A<sup>95</sup> A<sup>96</sup> A<sup>97</sup> A<sup>98</sup> A<sup>99</sup> A<sup>100</sup> A<sup>101</sup> A<sup>102</sup> A<sup>103</sup> A<sup>104</sup> A<sup>105</sup> A<sup>106</sup> A<sup>107</sup> A<sup>108</sup> A<sup>109</sup> A<sup>110</sup> A<sup>111</sup> A<sup>112</sup> A<sup>113</sup> A<sup>114</sup> A<sup>115</sup> A<sup>116</sup> A<sup>117</sup> A<sup>118</sup> A<sup>119</sup> A<sup>120</sup> A<sup>121</sup> A<sup>122</sup> A<sup>123</sup> A<sup>124</sup> A<sup>125</sup> A<sup>126</sup> A<sup>127</sup> A<sup>128</sup> A<sup>129</sup> A<sup>130</sup> A<sup>131</sup> A<sup>132</sup> A<sup>133</sup> A<sup>134</sup> A<sup>135</sup> A<sup>136</sup> A<sup>137</sup> A<sup>138</sup> A<sup>139</sup> A<sup>140</sup> A<sup>141</sup> A<sup>142</sup> A<sup>143</sup> A<sup>144</sup> A<sup>145</sup> A<sup>146</sup> A<sup>147</sup> A<sup>148</sup> A<sup>149</sup> A<sup>150</sup> A<sup>151</sup> A<sup>152</sup> A<sup>153</sup> A<sup>154</sup> A<sup>155</sup> A<sup>156</sup> A<sup>157</sup> A<sup>158</sup> A<sup>159</sup> A<sup>160</sup> A<sup>161</sup> A<sup>162</sup> A<sup>163</sup> A<sup>164</sup> A<sup>165</sup> A<sup>166</sup> A<sup>167</sup> A<sup>168</sup> A<sup>169</sup> A<sup>170</sup> A<sup>171</sup> A<sup>172</sup> A<sup>173</sup> A<sup>174</sup> A<sup>175</sup> A<sup>176</sup> A<sup>177</sup> A<sup>178</sup> A<sup>179</sup> A<sup>180</sup> A<sup>181</sup> A<sup>182</sup> A<sup>183</sup> A<sup>184</sup> A<sup>185</sup> A<sup>186</sup> A<sup>187</sup> A<sup>188</sup> A<sup>189</sup> A<sup>190</sup> A<sup>191</sup> A<sup>192</sup> A<sup>193</sup> A<sup>194</sup> A<sup>195</sup> A<sup>196</sup> A<sup>197</sup> A<sup>198</sup> A<sup>199</sup> A<sup>200</sup> A<sup>201</sup> A<sup>202</sup> A<sup>203</sup> A<sup>204</sup> A<sup>205</sup> A<sup>206</sup> A<sup>207</sup> A<sup>208</sup> A<sup>209</sup> A<sup>210</sup> A<sup>211</sup> A<sup>212</sup> A<sup>213</sup> A<sup>214</sup> A<sup>215</sup> A<sup>216</sup> A<sup>217</sup> A<sup>218</sup> A<sup>219</sup> A<sup>220</sup> A<sup>221</sup> A<sup>222</sup> A<sup>223</sup> A<sup>224</sup> A<sup>225</sup> A<sup>226</sup> A<sup>227</sup> A<sup>228</sup> A<sup>229</sup> A<sup>230</sup> A<sup>231</sup> A<sup>232</sup> A<sup>233</sup> A<sup>234</sup> A<sup>235</sup> A<sup>236</sup> A<sup>237</sup> A<sup>238</sup> A<sup>239</sup> A<sup>240</sup> A<sup>241</sup> A<sup>242</sup> A<sup>243</sup> A<sup>244</sup> A<sup>245</sup> A<sup>246</sup> A<sup>247</sup> A<sup>248</sup> A<sup>249</sup> A<sup>250</sup> A<sup>251</sup> A<sup>252</sup> A<sup>253</sup> A<sup>254</sup> A<sup>255</sup> A<sup>256</sup> A<sup>257</sup> A<sup>258</sup> A<sup>259</sup> A<sup>260</sup> A<sup>261</sup> A<sup>262</sup> A<sup>263</sup> A<sup>264</sup> A<sup>265</sup> A<sup>266</sup> A<sup>267</sup> A<sup>268</sup> A<sup>269</sup> A<sup>270</sup> A<sup>271</sup> A<sup>272</sup> A<sup>273</sup> A<sup>274</sup> A<sup>275</sup> A<sup>276</sup> A<sup>277</sup> A<sup>278</sup> A<sup>279</sup> A<sup>280</sup> A<sup>281</sup> A<sup>282</sup> A<sup>283</sup> A<sup>284</sup> A<sup>285</sup> A<sup>286</sup> A<sup>287</sup> A<sup>288</sup> A<sup>289</sup> A<sup>290</sup> A<sup>291</sup> A<sup>292</sup> A<sup>293</sup> A<sup>294</sup> A<sup>295</sup> A<sup>296</sup> A<sup>297</sup> A<sup>298</sup> A<sup>299</sup> A<sup>300</sup> A<sup>301</sup> A<sup>302</sup> A<sup>303</sup> A<sup>304</sup> A<sup>305</sup> A<sup>306</sup> A<sup>307</sup> A<sup>308</sup> A<sup>309</sup> A<sup>310</sup> A<sup>311</sup> A<sup>312</sup> A<sup>313</sup> A<sup>314</sup> A<sup>315</sup> A<sup>316</sup> A<sup>317</sup> A<sup>318</sup> A<sup>319</sup> A<sup>320</sup> A<sup>321</sup> A<sup>322</sup> A<sup>323</sup> A<sup>324</sup> A<sup>325</sup> A<sup>326</sup> A<sup>327</sup> A<sup>328</sup> A<sup>329</sup> A<sup>330</sup> A<sup>331</sup> A<sup>332</sup> A<sup>333</sup> A<sup>334</sup> A<sup>335</sup> A<sup>336</sup> A<sup>337</sup> A<sup>338</sup> A<sup>339</sup> A<sup>340</sup> A<sup>341</sup> A<sup>342</sup> A<sup>343</sup> A<sup>344</sup> A<sup>345</sup> A<sup>346</sup> A<sup>347</sup> A<sup>348</sup> A<sup>349</sup> A<sup>350</sup> A<sup>351</sup> A<sup>352</sup> A<sup>353</sup> A<sup>354</sup> A<sup>355</sup> A<sup>356</sup> A<sup>357</sup> A<sup>358</sup> A<sup>359</sup> A<sup>360</sup> A<sup>361</sup> A<sup>362</sup> A<sup>363</sup> A<sup>364</sup> A<sup>365</sup> A<sup>366</sup> A<sup>367</sup> A<sup>368</sup> A<sup>369</sup> A<sup>370</sup> A<sup>371</sup> A<sup>372</sup> A<sup>373</sup> A<sup>374</sup> A<sup>375</sup> A<sup>376</sup> A<sup>377</sup> A<sup>378</sup> A<sup>379</sup> A<sup>380</sup> A<sup>381</sup> A<sup>382</sup> A<sup>383</sup> A<sup>384</sup> A<sup>385</sup> A<sup>386</sup> A<sup>387</sup> A<sup>388</sup> A<sup>389</sup> A<sup>390</sup> A<sup>391</sup> A<sup>392</sup> A<sup>393</sup> A<sup>394</sup> A<sup>395</sup> A<sup>396</sup> A<sup>397</sup> A<sup>398</sup> A<sup>399</sup> A<sup>400</sup> A<sup>401</sup> A<sup>402</sup> A<sup>403</sup> A<sup>404</sup> A<sup>405</sup> A<sup>406</sup> A<sup>407</sup> A<sup>408</sup> A<sup>409</sup> A<sup>410</sup> A<sup>411</sup> A<sup>412</sup> A<sup>413</sup> A<sup>414</sup> A<sup>415</sup> A<sup>416</sup> A<sup>417</sup> A<sup>418</sup> A<sup>419</sup> A<sup>420</sup> A<sup>421</sup> A<sup>422</sup> A<sup>423</sup> A<sup>424</sup> A<sup>425</sup> A<sup>426</sup> A<sup>427</sup> A<sup>428</sup> A<sup>429</sup> A<sup>430</sup> A<sup>431</sup> A<sup>432</sup> A<sup>433</sup> A<sup>434</sup> A<sup>435</sup> A<sup>436</sup> A<sup>437</sup> A<sup>438</sup> A<sup>439</sup> A<sup>440</sup> A<sup>441</sup> A<sup>442</sup> A<sup>443</sup> A<sup>444</sup> A<sup>445</sup> A<sup>446</sup> A<sup>447</sup> A<sup>448</sup> A<sup>449</sup> A<sup>450</sup> A<sup>451</sup> A<sup>452</sup> A<sup>453</sup> A<sup>454</sup> A<sup>455</sup> A<sup>456</sup> A<sup>457</sup> A<sup>458</sup> A<sup>459</sup> A<sup>460</sup> A<sup>461</sup> A<sup>462</sup> A<sup>463</sup> A<sup>464</sup> A<sup>465</sup> A<sup>466</sup> A<sup>467</sup> A<sup>468</sup> A<sup>469</sup> A<sup>470</sup> A<sup>471</sup> A<sup>472</sup> A<sup>473</sup> A<sup>474</sup> A<sup>475</sup> A<sup>476</sup> A<sup>477</sup> A<sup>478</sup> A<sup>479</sup> A<sup>480</sup> A<sup>481</sup> A<sup>482</sup> A<sup>483</sup> A<sup>484</sup> A<sup>485</sup> A<sup>486</sup> A<sup>487</sup> A<sup>488</sup> A<sup>489</sup> A<sup>490</sup> A<sup>491</sup> A<sup>492</sup> A<sup>493</sup> A<sup>494</sup> A<sup>495</sup> A<sup>496</sup> A<sup>497</sup> A<sup>498</sup> A<sup>499</sup> A<sup>500</sup> A<sup>501</sup> A<sup>502</sup> A<sup>503</sup> A<sup>504</sup> A<sup>505</sup> A<sup>506</sup> A<sup>507</sup> A<sup>508</sup> A<sup>509</sup> A<sup>510</sup> A<sup>511</sup> A<sup>512</sup> A<sup>513</sup> A<sup>514</sup> A<sup>515</sup> A<sup>516</sup> A<sup>517</sup> A<sup>518</sup> A<sup>519</sup> A<sup>520</sup> A<sup>521</sup> A<sup>522</sup> A<sup>523</sup> A<sup>524</sup> A<sup>525</sup> A<sup>526</sup> A<sup>527</sup> A<sup>528</sup> A<sup>529</sup> A<sup>530</sup> A<sup>531</sup> A<sup>532</sup> A<sup>533</sup> A<sup>534</sup> A<sup>535</sup> A<sup>536</sup> A<sup>537</sup> A<sup>538</sup> A<sup>539</sup> A<sup>540</sup> A<sup>541</sup> A<sup>542</sup> A<sup>543</sup> A<sup>544</sup> A<sup>545</sup> A<sup>546</sup> A<sup>547</sup> A<sup>548</sup> A<sup>549</sup> A<sup>550</sup> A<sup>551</sup> A<sup>552</sup> A<sup>553</sup> A<sup>554</sup> A<sup>555</sup> A<sup>556</sup> A<sup>557</sup> A<sup>558</sup> A<sup>559</sup> A<sup>560</sup> A<sup>561</sup> A<sup>562</sup> A<sup>563</sup> A<sup>564</sup> A<sup>565</sup> A<sup>566</sup> A<sup>567</sup> A<sup>568</sup> A<sup>569</sup> A<sup>570</sup> A<sup>571</sup> A<sup>572</sup> A<sup>573</sup> A<sup>574</sup> A<sup>575</sup> A<sup>576</sup> A<sup>577</sup> A<sup>578</sup> A<sup>579</sup> A<sup>580</sup> A<sup>581</sup> A<sup>582</sup> A<sup>583</sup> A<sup>584</sup> A<sup>585</sup> A<sup>586</sup> A<sup>587</sup> A<sup>588</sup> A<sup>589</sup> A<sup>590</sup> A<sup>591</sup> A<sup>592</sup> A<sup>593</sup> A<sup>594</sup> A<sup>595</sup> A<sup>596</sup> A<sup>597</sup> A<sup>598</sup> A<sup>599</sup> A<sup>600</sup> A<sup>601</sup> A<sup>602</sup> A<sup>603</sup> A<sup>604</sup> A<sup>605</sup> A<sup>606</sup> A<sup>607</sup> A<sup>608</sup> A<sup>609</sup> A<sup>610</sup> A<sup>611</sup> A<sup>612</sup> A<sup>613</sup> A<sup>614</sup> A<sup>615</sup> A<sup>616</sup> A<sup>617</sup> A<sup>618</sup> A<sup>619</sup> A<sup>620</sup> A<sup>621</sup> A<sup>622</sup> A<sup>623</sup> A<sup>624</sup> A<sup>625</sup> A<sup>626</sup> A<sup>627</sup> A<sup>628</sup> A<sup>629</sup> A<sup>630</sup> A<sup>631</sup> A<sup>632</sup> A<sup>633</sup> A<sup>634</sup> A<sup>635</sup> A<sup>636</sup> A<sup>637</sup> A<sup>638</sup> A<sup>639</sup> A<sup>640</sup> A<sup>641</sup> A<sup>642</sup> A<sup>643</sup> A<sup>644</sup> A<sup>645</sup> A<sup>646</sup> A<sup>647</sup> A<sup>648</sup> A<sup>649</sup> A<sup>650</sup> A<sup>651</sup> A<sup>652</sup> A<sup>653</sup> A<sup>654</sup> A<sup>655</sup> A<sup>656</sup> A<sup>657</sup> A<sup>658</sup> A<sup>659</sup> A<sup>660</sup> A<sup>661</sup> A<sup>662</sup> A<sup>663</sup> A<sup>664</sup> A<sup>665</sup> A<sup>666</sup> A<sup>667</sup> A<sup>668</sup> A<sup>669</sup> A<sup>670</sup> A<sup>671</sup> A<sup>672</sup> A<sup>673</sup> A<sup>674</sup> A<sup>675</sup> A<sup>676</sup> A<sup>677</sup> A<sup>678</sup> A<sup>679</sup> A<sup>680</sup> A<sup>681</sup> A<sup>682</sup> A<sup>683</sup> A<sup>684</sup> A<sup>685</sup> A<sup>686</sup> A<sup>687</sup> A<sup>688</sup> A<sup>689</sup> A<sup>690</sup> A<sup>691</sup> A<sup>692</sup> A<sup>693</sup> A<sup>694</sup> A<sup>695</sup> A<sup>696</sup> A<sup>697</sup> A<sup>698</sup> A<sup>699</sup> A<sup>700</sup> A<sup>701</sup> A<sup>702</sup> A<sup>703</sup> A<sup>704</sup> A<sup>705</sup> A<sup>706</sup> A<sup>707</sup> A<sup>708</sup> A<sup>709</sup> A<sup>710</sup> A<sup>711</sup> A<sup>712</sup> A<sup>713</sup> A<sup>714</sup> A<sup>715</sup> A<sup>716</sup> A<sup>717</sup> A<sup>718</sup> A<sup>719</sup> A<sup>720</sup> A<sup>721</sup> A<sup>722</sup> A<sup>723</sup> A<sup>724</sup> A<sup>725</sup> A<sup>726</sup> A<sup>727</sup> A<sup>728</sup> A<sup>729</sup> A<sup>730</sup> A<sup>731</sup> A<sup>732</sup> A<sup>733</sup> A<sup>734</sup> A<sup>735</sup> A<sup>736</sup> A<sup>737</sup> A<sup>738</sup> A<sup>739</sup> A<sup>740</sup> A<sup>741</sup> A<sup>742</sup> A<sup>743</sup> A<sup>744</sup> A<sup>745</sup> A<sup>746</sup> A<sup>747</sup> A<sup>748</sup> A<sup>749</sup> A<sup>750</sup> A<sup>751</sup> A<sup>752</sup> A<sup>753</sup> A<sup>754</sup> A<sup>755</sup> A<sup>756</sup> A<sup>757</sup> A<sup>758</sup> A<sup>759</sup> A<sup>760</sup> A<sup>761</sup> A<sup>762</sup> A<sup>763</sup> A<sup>764</sup> A<sup>765</sup> A<sup>766</sup> A<sup>767</sup> A<sup>768</sup> A<sup>769</sup> A<sup>770</sup> A<sup>771</sup> A<sup>772</sup> A<sup>773</sup> A<sup>774</sup> A<sup>775</sup> A<sup>776</sup> A<sup>777</sup> A<sup>778</sup> A<sup>779</sup> A<sup>780</sup> A<sup>781</sup> A<sup>782</sup> A<sup>783</sup> A<sup>784</sup> A<sup>785</sup> A<sup>786</sup> A<sup>787</sup> A<sup>788</sup> A<sup>789</sup> A<sup>790</sup> A<sup>791</sup> A<sup>792</sup> A<sup>793</sup> A<sup>794</sup> A<sup>795</sup> A<sup>796</sup> A<sup>797</sup> A<sup>798</sup> A<sup>799</sup> A<sup>800</sup> A<sup>801</sup> A<sup>802</sup> A<sup>803</sup> A<sup>804</sup> A<sup>805</sup> A<sup>806</sup> A<sup>807</sup> A<sup>808</sup> A<sup>809</sup> A<sup>810</sup> A<sup>811</sup> A<sup>812</sup> A<sup>813</sup> A<sup>814</sup> A<sup>815</sup> A<sup>816</sup> A<sup>817</sup> A<sup>818</sup> A<sup>819</sup> A<sup>820</sup> A<sup>821</sup> A<sup>822</sup> A<sup>823</sup> A<sup>824</sup> A<sup>825</sup> A<sup>826</sup> A<sup>827</sup> A<sup>828</sup> A<sup>829</sup> A<sup>830</sup> A<sup>831</sup> A<sup>832</sup> A<sup>833</sup> A<sup>834</sup> A<sup>835</sup> A<sup>836</sup> A<sup>837</sup> A<sup>838</sup> A<sup>839</sup> A<sup>840</sup> A<sup>841</sup> A<sup>842</sup> A<sup>843</sup> A<sup>844</sup> A<sup>845</sup> A<sup>846</sup> A<sup>847</sup> A<sup>848</sup> A<sup>849</sup> A<sup>850</sup> A<sup>851</sup> A<sup>852</sup> A<sup>853</sup> A<sup>854</sup> A<sup>855</sup> A<sup>856</sup> A<sup>857</sup> A<sup>858</sup> A<sup>859</sup> A<sup>860</sup> A<sup>861</sup> A<sup>862</sup> A<sup>863</sup> A<sup>864</sup> A<sup>865</sup> A<sup>866</sup> A<sup>867</sup> A<sup>868</sup> A<sup>869</sup> A<sup>870</sup> A<sup>871</sup> A<sup>872</sup> A<sup>873</sup> A<sup>874</sup> A<sup>875</sup> A<sup>876</sup> A<sup>877</sup> A<sup>878</sup> A<sup>879</sup> A<sup>880</sup> A<sup>881</sup> A<sup>882</sup> A<sup>883</sup> A<sup>884</sup> A<sup>885</sup> A<sup>886</sup> A<sup>887</sup> A<sup>888</sup> A<sup>889</sup> A<sup>890</sup> A<sup>891</sup> A<sup>892</sup> A<sup>893</sup> A<sup>894</sup> A<sup>895</sup> A<sup>896</sup> A<sup>897</sup> A<sup>898</sup> A<sup>899</sup> A<sup>900</sup> A<sup>901</sup> A<sup>902</sup> A<sup>903</sup> A<sup>904</sup> A<sup>905</sup> A<sup>906</sup> A<sup>907</sup> A<sup>908</sup> A<sup>909</sup> A<sup>910</sup> A<sup>911</sup> A<sup>912</sup> A<sup>913</sup> A<sup>914</sup> A<sup>915</sup> A<sup>916</sup> A<sup>917</sup> A<sup>918</sup> A<sup>919</sup> A<sup>920</sup> A<sup>921</sup> A<sup>922</sup> A<sup>923</sup> A<sup>924</sup> A<sup>925</sup> A<sup>926</sup> A<sup>927</sup> A<sup>928</sup> A<sup>929</sup> A<sup>930</sup> A<sup>931</sup> A<sup>932</sup> A<sup>933</sup> A<sup>934</sup> A<sup>935</sup> A<sup>936</sup> A<sup>937</sup> A<sup>938</sup> A<sup>939</sup> A<sup>940</sup> A<sup>941</sup> A<sup>942</sup> A<sup>943</sup> A<sup>944</sup> A<sup>945</sup> A<sup>946</sup> A<sup>947</sup> A<sup>948</sup> A<sup>949</sup> A<sup>950</sup> A<sup>951</sup> A<sup>952</sup> A<sup>953</sup> A<sup>954</sup> A<sup>955</sup> A<sup>956</sup> A<sup>957</sup> A<sup>958</sup> A<sup>959</sup> A<sup>960</sup> A<sup>961</sup> A<sup>962</sup> A<sup>963</sup> A<sup>964</sup> A<sup>965</sup> A<sup>966</sup> A<sup>967</sup> A<sup>968</sup> A<sup>969</sup> A<sup>970</sup> A<sup>971</sup> A<sup>972</sup> A<sup>973</sup> A<sup>974</sup> A<sup>975</sup> A<sup>976</sup> A<sup>977</sup> A<sup>978</sup> A<sup>979</sup> A<sup>980</sup> A<sup>981</sup> A<sup>982</sup> A<sup>983</sup> A<sup>984</sup> A<sup>985</sup> A<sup>986</sup> A<sup>987</sup> A<sup>988</sup> A<sup>989</sup> A<sup>990</sup> A<sup>991</sup> A<sup>992</sup> A<sup>993</sup> A<sup>994</sup> A<sup>995</sup> A<sup>996</sup> A<sup>997</sup> A<sup>998</sup> A<sup>999</sup> A<sup>1000</sup> A<sup>1001</sup> A<sup>1002</sup> A<sup>1003</sup> A<sup>1004</sup> A<sup>1005</sup> A<sup>1006</sup> A<sup>1007</sup> A<sup>1008</sup> A<sup>1009</sup> A<sup>1010</sup> A<sup>1011</sup> A<sup>1012</sup> A<sup>1013</sup> A<sup>1014</sup> A<sup>1015</sup> A<sup>1016</sup> A<sup>1017</sup> A<sup>1018</sup> A<sup>1019</sup> A<sup>1020</sup> A<sup>1021</sup> A<sup>1022</sup> A<sup>1023</sup> A<sup>1024</sup> A<sup>1025</sup> A<sup>1026</sup> A<sup>1027</sup> A<sup>1028</sup> A<sup>1029</sup> A<sup>1030</sup> A<sup>1031</sup> A<sup>1032</sup> A<sup>1033</sup> A<sup>1034</sup> A<sup>1035</sup> A<sup>1036</sup> A<sup>1037</sup> A<sup>1038</sup> A<sup>1039</sup> A<sup>1040</sup> A<sup>1041</sup> A<sup>1042</sup> A<sup>1043</sup> A<sup>1044</sup> A<sup>1045</sup> A<sup>1046</sup> A<sup>1047</sup> A<sup>1048</sup> A<sup>1049</sup> A<sup>1050</sup> A<sup>1051</sup> A<sup>1052</sup> A<sup>1053</sup> A<sup>1054</sup> A<sup>1055</sup> A<sup>1056</sup> A<sup>1057</sup> A<sup>1058</sup> A<sup>1059</sup> A<sup>1060</sup> A<sup>1061</sup> A<sup>1062</sup> A<sup>1063</sup> A<sup>1064</sup> A<sup>1065</sup> A<sup>1066</sup> A<sup>1067</sup> A<sup>1068</sup> A<sup>1069</sup> A<sup>1070</sup> A<sup>1071</sup> A<sup>1072</sup> A<sup>1073</sup> A<sup>1074</sup> A<sup>1075</sup> A<sup>1076</sup> A<sup>1077</sup> A<sup>1078</sup> A<sup>1079</sup> A<sup>1080</sup> A<sup>1081</sup> A<sup>1082</sup> A<sup>1083</sup> A<sup>1084</sup> A<sup>1085</sup> A<sup>1086</sup> A<sup>1087</sup> A<sup>1088</sup> A<sup>1089</sup> A<sup>1090</sup> A<sup>1091</sup> A<sup>1092</sup> A<sup>1093</sup> A<sup>1094</sup> A<sup>1095</sup> A<sup>1096</sup> A<sup>1097</sup> A<sup>1098</sup> A<sup>1099</sup> A<sup>1100</sup> A<sup>1101</sup> A<sup>1102</sup> A<sup>1103</sup> A<sup>1104</sup> A<sup>1105</sup> A<sup>1106</sup> A<sup>1107</sup> A<sup>1108</sup> A<sup>1109</sup> A<sup>1110</sup> A<sup>1111</sup> A<sup>1112</sup> A<sup>1113</sup> A<sup>1114</sup> A<sup>1115</sup> A<sup>1116</sup> A<sup>1117</sup> A<sup>1118</sup> A<sup>1119</sup> A<sup>1120</sup> A<sup>1121</sup> A<sup>1122</sup> A<sup>1123</sup> A<sup>1124</sup> A<sup>1125</sup> A<sup>1126</sup> A<sup>1127</sup> A<sup>1128</sup> A<sup>1129</sup> A<sup>1130</sup> A<sup>1131</sup> A<sup>1132</sup> A<sup>1133</sup> A<sup>1134</sup> A<sup>1135</sup> A<sup>1136</sup> A<sup>1137</sup> A<sup>1138</sup> A<sup>1139</sup> A<sup>1140</sup> A<sup>1141</sup> A<sup>1142</sup> A<sup>1143</sup> A<sup>1144</sup> A<sup>1145</sup> A<sup>1146</sup> A<sup>1147</sup> A<sup>1148</sup> A<sup>1149</sup> A<sup>1150</sup> A<sup>1151</sup> A<sup>1152</sup> A<sup>1153</sup> A<sup>1154</sup> A<sup>1155</sup> A<sup>1156</sup> A<sup>1157</sup> A<sup>1158</sup> A<sup>1159</sup> A<sup>1160</sup> A<sup>1161</sup> A<sup>1162</sup> A<sup>1163</sup> A<sup>1164</sup> A<sup>1165</sup> A<sup>1166</sup> A<sup>1167</sup> A<sup>1168</sup> A<sup>1169</sup> A<sup>1170</sup> A<sup>1171</sup> A<sup>1172</sup> A<sup>1173</sup> A<sup>1174</sup> A<sup>1175</sup> A<sup>1176</sup> A<sup>1177</sup> A<sup>1178</sup> A<sup>1179</sup> A<sup>1180</sup> A<sup>1181</sup> A<sup>1182</sup> A<sup>1183</sup> A<sup>1184</sup> A<sup>1185</sup> A<sup>1186</sup> A<sup>1187</sup> A<sup>1188</sup> A<sup>1189</sup> A<sup>1190</sup> A<sup>1191</sup> A<sup>1192</sup> A<sup>1193</sup> A<sup>1194</sup> A<sup>1195</sup> A<sup>1196</sup> A<sup>1197</sup> A<sup>1198</sup> A<sup>1199</sup> A<sup>1200</sup> A<sup>1201</sup> A<sup>1202</sup> A<sup>1203</sup> A<sup>1204</sup> A<sup>1205</sup> A<sup>1206</sup> A<sup>1207</sup> A<sup>1208</sup> A<sup>1209</sup> A<sup>1210</sup> A<sup>1211</sup> A<sup>1212</sup> A<sup>1213</sup> A<sup>1214</sup> A

## PM Monitoring Adjustment

The Sandy site has been affiliated to the AURN network and so data does not require to be adjusted by the VCM method. As with the NO<sub>2</sub> analyser, the location is representative of public exposure at certain locations along the A1, however, some residential properties are closer to the road (although standing traffic doesn't occur as much at these locations) and some are more distant. This section of the A1 was the subject of a Detailed Assessment in 2008 which included PM<sub>10</sub>. It was found that PM<sub>10</sub> levels did not threaten either of the objectives, which were backed up by 2008 monitoring data.

## Short-term to Long-term Data Adjustment

Several NO<sub>2</sub> diffusion sites had less than 75% data capture during 2014 – resulting in the need to “annualise” the data sets.

Two long term automatic monitoring sites from the Hertfordshire and Bedfordshire Monitoring Network were selected to provide data for this calculation. They were East Herts Sawbridgeworth and Luton Challney.

2014 ppb data source H&B network	Jan	Feb	Mar	Apr	May	Jun	Jul	Aug	Sep	Oct	Nov	Dec	Ave	data capture%
East Herts Sawbridgeworth background	12	10	12	9	7	6	5	6	8	11	13	12	9	99
Hertsmere Borehamwood background	18	13	17	13	11	9	7	8	12	14	18	13	13	97
2014 converted to ug/m3 (ppb*1.913)														
East Herts Sawbridgeworth background	23	19	23	17	13	11	10	11	15	21	25	23	18	99
Hertsmere Borehamwood background	34	25	33	25	21	17	13	15	23	27	34	25	24	97
Period Mean	Jan & Feb		Apr-Jun		Nov & Dec									
East Herts Sawbridgeworth background	21		14		24									
Hertsmere Borehamwood background	30		21		30									
Ann mean : period mean (ratio)														
East Herts Sawbridgeworth background	0.841		1.26		0.74									
Hertsmere Borehamwood background	0.823		1.16		0.823									
Ave	0.832		1.21		0.78							0.94		
AM	45.3	0.94												
High St South, Dunstable (1) annualised tube ave AM*Ra			42.58											

# Central Bedfordshire Council

2014 ppb data source H&B network	Jan	Feb	Mar	Apr	May	Jun	Jul	Aug	Sep	Oct	Nov	Dec	Ave	data capture%
East Herts Sawbridgeworth background	12	10	12	9	7	6	5	6	8	11	13	12	9	99
Hertsmere Borehamwood background	18	13	17	13	11	9	7	8	12	14	18	13	13	97
2014 converted to ug/m3 (ppb*1.913)														
East Herts Sawbridgeworth background	23	19	23	17	13	11	10	11	15	21	25	23	18	99
Hertsmere Borehamwood background	34	25	33	25	21	17	13	15	23	27	34	25	24	97
Period Mean	Jan - Jul			Oct & Nov										
East Herts Sawbridgeworth background	17		23											
Hertsmere Borehamwood background	24		31											
Ann mean : period mean (ratio)														
East Herts Sawbridgeworth background	1.061		0.77											
Hertsmere Borehamwood background	1.014		0.8											
Ave	1.038		0.78									0.91		
	AM	Ra												
	23.37	0.91												
<b>Tebworth (13) annualised tube ave AM*Ra</b>			21.27											

2014 ppb data source H&B network	Jan	Feb	Mar	Apr	May	Jun	Jul	Aug	Sep	Oct	Nov	Dec	Ave	data capture%
East Herts Sawbridgeworth background	12	10	12	9	7	6	5	6	8	11	13	12	9	99
Hertsmere Borehamwood background	18	13	17	13	11	9	7	8	12	14	18	13	13	97
2014 converted to ug/m3 (ppb*1.913)														
East Herts Sawbridgeworth background	23	19	23	17	13	11	10	11	15	21	25	23	18	99
Hertsmere Borehamwood background	34	25	33	25	21	17	13	15	23	27	34	25	24	97
Period Mean	Jan - Jul		Oct											
East Herts Sawbridgeworth background	17		21											
Hertsmere Borehamwood background	24		27											
Ann mean : period mean (ratio)														
East Herts Sawbridgeworth background	1.061		0.84											
Hertsmere Borehamwood background	1.014		0.91											
Ave	1.038		0.88									0.96		
	AM	Ra												
	23.37	0.96												
<b>Barton (6) annualised tube ave AM*Ra</b>			22.44											

2014 ppb data source H&B network	Jan	Feb	Mar	Apr	May	Jun	Jul	Aug	Sep	Oct	Nov	Dec	Ave	data capture%
East Herts Sawbridgeworth background	12	10	12	9	7	6	5	6	8	11	13	12	9	99
Hertsmere Borehamwood background	18	13	17	13	11	9	7	8	12	14	18	13	13	97
2014 converted to ug/m3 (ppb*1.913)														
East Herts Sawbridgeworth background	23	19	23	17	13	11	10	11	15	21	25	23	18	99
Hertsmere Borehamwood background	34	25	33	25	21	17	13	15	23	27	34	25	24	97
Period Mean	Jan - Mar		Jun & Jul	Nov & Dec										
East Herts Sawbridgeworth background	22		11	24										
Hertsmere Borehamwood background	31		15	30										
Ann mean : period mean (ratio)														
East Herts Sawbridgeworth background	0.816		1.68	0.74										
Hertsmere Borehamwood background	0.797		1.59	0.823										
Ave	0.807		1.64	0.78								1.08		
	AM	Ra												
	39.79	1.08												
<b>Houghton (10) annualised tube ave AM*Ra</b>			42.97											

# Central Bedfordshire Council

2014 ppb data source H&B network	Jan	Feb	Mar	Apr	May	Jun	Jul	Aug	Sep	Oct	Nov	Dec	Ave	data capture <sup>9</sup>
East Herts Sawbridgeworth background	12	10	12	9	7	6	5	6	8	11	13	12	9	99
Hertsmere Borehamwood background	18	13	17	13	11	9	7	8	12	14	18	13	13	97
2014 converted to ug/m3 (ppb*1.913)														
East Herts Sawbridgeworth background	23	19	23	17	13	11	10	11	15	21	25	23	18	99
Hertsmere Borehamwood background	34	25	33	25	21	17	13	15	23	27	34	25	24	97
Period Mean	Jan & Feb		Apr		Jun & Jul		Dec							
East Herts Sawbridgeworth background	21		17		11		23							
Hertsmere Borehamwood background	30		25		15		25							
Ann mean : period mean (ratio)														
East Herts Sawbridgeworth background	0.841		1.04		1.682		0.77							
Hertsmere Borehamwood background	0.823		0.98		1.594		0.98							
Ave	<b>0.832</b>		<b>1.01</b>		<b>1.64</b>		<b>1.74</b>					<b>1.31</b>		
	AM	Ra												
	46.29	1.31												
<b>Argos, High St North, Dunstable annualised tube ave AM*Ra</b>			<b>60.64</b>											

2014 ppb data source H&B network	Jan	Feb	Mar	Apr	May	Jun	Jul	Aug	Sep	Oct	Nov	Dec	Ave	data capture <sup>9</sup>
East Herts Sawbridgeworth background	12	10	12	9	7	6	5	6	8	11	13	12	9	99
Hertsmere Borehamwood background	18	13	17	13	11	9	7	8	12	14	18	13	13	97
2014 converted to ug/m3 (ppb*1.913)														
East Herts Sawbridgeworth background	23	19	23	17	13	11	10	11	15	21	25	23	18	99
Hertsmere Borehamwood background	34	25	33	25	21	17	13	15	23	27	34	25	24	97
Period Mean	Jan - Jun			Nov & Dec										
East Herts Sawbridgeworth background	18			24										
Hertsmere Borehamwood background	26			30										
Ann mean : period mean (ratio)														
East Herts Sawbridgeworth background	0.991			0.74										
Hertsmere Borehamwood background	0.944			0.82										
Ave	<b>0.968</b>			<b>0.78</b>								<b>0.87</b>		
	AM	Ra												
	34.24	0.87												
<b>Frenchs Ave/High St North, Dunstable annualised tube ave AM*Ra</b>			<b>29.79</b>											

2014 ppb data source H&B network	Jan	Feb	Mar	Apr	May	Jun	Jul	Aug	Sep	Oct	Nov	Dec	Ave	data capture <sup>9</sup>
East Herts Sawbridgeworth background	12	10	12	9	7	6	5	6	8	11	13	12	9	99
Hertsmere Borehamwood background	18	13	17	13	11	9	7	8	12	14	18	13	13	97
2014 converted to ug/m3 (ppb*1.913)														
East Herts Sawbridgeworth background	23	19	23	17	13	11	10	11	15	21	25	23	18	99
Hertsmere Borehamwood background	34	25	33	25	21	17	13	15	23	27	34	25	24	97
Period Mean	Jan & Feb			Apr - Jun			Dec							
East Herts Sawbridgeworth background	21			14			23							
Hertsmere Borehamwood background	30			21			25							
Ann mean : period mean (ratio)														
East Herts Sawbridgeworth background	0.841			1.26			0.769							
Hertsmere Borehamwood background	0.823			1.16			0.976							
Ave	<b>0.832</b>			<b>1.21</b>			<b>0.87</b>					<b>0.97</b>		
	AM	Ra												
	31.12	0.97												
<b>West St, Dunstable (26) annualised tube ave AM*Ra</b>			<b>30.19</b>											

## Central Bedfordshire Council

2014 ppb data source H&B network															data capture?
	Jan	Feb	Mar	Apr	May	Jun	Jul	Aug	Sep	Oct	Nov	Dec	Ave		
East Herts Sawbridgeworth background	12	10	12	9	7	6	5	6	8	11	13	12	9	99	
Hertsmere Borehamwood background	18	13	17	13	11	9	7	8	12	14	18	13	13	97	
2014 converted to ug/m3 (ppb*1.913)															
East Herts Sawbridgeworth background	23	19	23	17	13	11	10	11	15	21	25	23	18	99	
Hertsmere Borehamwood background	34	25	33	25	21	17	13	15	23	27	34	25	24	97	
Period Mean	Jan - Apr		Jun		Nov										
East Herts Sawbridgeworth background	21		11		25										
Hertsmere Borehamwood background	29		17		34										
Ann mean : period mean (ratio)															
East Herts Sawbridgeworth background	0.86		1.61		0.708										
Hertsmere Borehamwood background	0.836		1.43		0.717										
Ave	0.848		1.52		0.71							1.03			
	AM	Ra													
	52.27	1.03													
5 High St South, Dunstable (34) annualised tube ave AM*Ra			53.84												

2014 ppb data source H&B network															data capture?
	Jan	Feb	Mar	Apr	May	Jun	Jul	Aug	Sep	Oct	Nov	Dec	Ave		
East Herts Sawbridgeworth background	12	10	12	9	7	6	5	6	8	11	13	12	9	99	
Hertsmere Borehamwood background	18	13	17	13	11	9	7	8	12	14	18	13	13	97	
2014 converted to ug/m3 (ppb*1.913)															
East Herts Sawbridgeworth background	23	19	23	17	13	11	10	11	15	21	25	23	18	99	
Hertsmere Borehamwood background	34	25	33	25	21	17	13	15	23	27	34	25	24	97	
Period Mean	Mar & Apr		Jun & Jul		Oct - Dec										
East Herts Sawbridgeworth background	20		11		23										
Hertsmere Borehamwood background	29		15		29										
Ann mean : period mean (ratio)															
East Herts Sawbridgeworth background	0.881		1.68		0.771										
Hertsmere Borehamwood background	0.85		1.59		0.85										
Ave	0.865		1.64		0.81							1.1			
	AM	Ra													
	45.91	1.10													
247 Luton Rd, Dunstable (36) annualised tube ave AM*Ra			50.50												

2014 ppb data source H&B network															data capture?
	Jan	Feb	Mar	Apr	May	Jun	Jul	Aug	Sep	Oct	Nov	Dec	Ave		
East Herts Sawbridgeworth background	12	10	12	9	7	6	5	6	8	11	13	12	9	99	
Hertsmere Borehamwood background	18	13	17	13	11	9	7	8	12	14	18	13	13	97	
2014 converted to ug/m3 (ppb*1.913)															
East Herts Sawbridgeworth background	23	19	23	17	13	11	10	11	15	21	25	23	18	99	
Hertsmere Borehamwood background	34	25	33	25	21	17	13	15	23	27	34	25	24	97	
Period Mean	Jan		Mar - Jul		Oct		Dec								
East Herts Sawbridgeworth background	23		15		21		23								
Hertsmere Borehamwood background	34		22		27		25								
Ann mean : period mean (ratio)															
East Herts Sawbridgeworth background	0.769		1.19		0.843		0.77								
Hertsmere Borehamwood background	0.717		1.12		0.903		0.98								
Ave	0.743		1.15		0.87		1.74					1.13			
	AM	Ra													
	47.08	1.13													
24 Luton Road, Dunstable annualised tube ave															
AM*Ra			53.20												

# Central Bedfordshire Council

2014 ppb data source H&B network	Jan	Feb	Mar	Apr	May	Jun	Jul	Aug	Sep	Oct	Nov	Dec	Ave	data capture?
East Herts Sawbridgeworth background	12	10	12	9	7	6	5	6	8	11	13	12	9	99
Hertsmere Borehamwood background	18	13	17	13	11	9	7	8	12	14	18	13	13	97
2014 converted to ug/m3 (ppb*1.913)														
East Herts Sawbridgeworth background	23	19	23	17	13	11	10	11	15	21	25	23	18	99
Hertsmere Borehamwood background	34	25	33	25	21	17	13	15	23	27	34	25	24	97
Period Mean	Jul		Oct - Dec											
East Herts Sawbridgeworth background	10		23											
Hertsmere Borehamwood background	13		29											
Ann mean : period mean (ratio)														
East Herts Sawbridgeworth background	1.77		0.77											
Hertsmere Borehamwood background	1.876		0.85											
Ave	1.823		0.81									1.32		
	AM	Ra												
	20.72	1.32												
<b>Jeans Way (Busway (51)) annualised tube ave AM*Ra</b>			27.35											

2014 ppb data source H&B network	Jan	Feb	Mar	Apr	May	Jun	Jul	Aug	Sep	Oct	Nov	Dec	Ave	data capture?
East Herts Sawbridgeworth background	12	10	12	9	7	6	5	6	8	11	13	12	9	99
Hertsmere Borehamwood background	18	13	17	13	11	9	7	8	12	14	18	13	13	97
2014 converted to ug/m3 (ppb*1.913)														
East Herts Sawbridgeworth background	23	19	23	17	13	11	10	11	15	21	25	23	18	99
Hertsmere Borehamwood background	34	25	33	25	21	17	13	15	23	27	34	25	24	97
Period Mean	Jan & Feb		Apr-Jul		Oct-Dec									
East Herts Sawbridgeworth background	21		13		23									
Hertsmere Borehamwood background	30		19		29									
Ann mean : period mean (ratio)														
East Herts Sawbridgeworth background	0.841		1.37		0.771									
Hertsmere Borehamwood background	0.823		1.28		0.85									
Ave	0.832		1.32		0.81							0.99		
	AM	Ra												
	36.87	0.99												
<b>Flint Court (35)</b>			36.50											

2014 ppb data source H&B network	Jan	Feb	Mar	Apr	May	Jun	Jul	Aug	Sep	Oct	Nov	Dec	Ave	data capture?
East Herts Sawbridgeworth background	12	10	12	9	7	6	5	6	8	11	13	12	9	99
Hertsmere Borehamwood background	18	13	17	13	11	9	7	8	12	14	18	13	13	97
2014 converted to ug/m3 (ppb*1.913)														
East Herts Sawbridgeworth background	23	19	23	17	13	11	10	11	15	21	25	23	18	99
Hertsmere Borehamwood background	34	25	33	25	21	17	13	15	23	27	34	25	24	97
Period Mean	Jan-Jul		Oct		Dec									
East Herts Sawbridgeworth background	17		21		23									
Hertsmere Borehamwood background	24		27		25									
Ann mean : period mean (ratio)														
East Herts Sawbridgeworth background	1.061		0.84		0.769									
Hertsmere Borehamwood background	1.014		0.9		0.976									
Ave	1.038		0.87		0.87							0.93		
	AM	Ra												
	38	0.93												
<b>89 Luton Rd (27)</b>			35.34											



# Central Bedfordshire Council

2014 ppb data source H&B network	Jan	Feb	Mar	Apr	May	Jun	Jul	Aug	Sep	Oct	Nov	Dec	Ave	data capture?
East Herts Sawbridgeworth background	12	10	12	9	7	6	5	6	8	11	13	12	9	99
Hertsmere Borehamwood background	18	13	17	13	11	9	7	8	12	14	18	13	13	97
2014 converted to ug/m3 (ppb*1.913)														
East Herts Sawbridgeworth background	23	19	23	17	13	11	10	11	15	21	25	23	18	99
Hertsmere Borehamwood background	34	25	33	25	21	17	13	15	23	27	34	25	24	97
Period Mean	Jan - Jul		Nov											
East Herts Sawbridgeworth background	17		25											
Hertsmere Borehamwood background	24		34											
Ann mean : period mean (ratio)														
East Herts Sawbridgeworth background	1.061		0.71											
Hertsmere Borehamwood background	1.014		0.72											
Ave	1.038		0.71									0.88		
AM	46.46	Ra												
Chalton Cross Cottages (41) annualised tube ave AM*Ra			40.88											

2014 ppb data source H&B network	Jan	Feb	Mar	Apr	May	Jun	Jul	Aug	Sep	Oct	Nov	Dec	Ave	data capture?
East Herts Sawbridgeworth background	12	10	12	9	7	6	5	6	8	11	13	12	9	99
Hertsmere Borehamwood background	18	13	17	13	11	9	7	8	12	14	18	13	13	97
2014 converted to ug/m3 (ppb*1.913)														
East Herts Sawbridgeworth background	23	19	23	17	13	11	10	11	15	21	25	23	18	99
Hertsmere Borehamwood background	34	25	33	25	21	17	13	15	23	27	34	25	24	97
Period Mean	Jan - Jul		Nov & Dec											
East Herts Sawbridgeworth background	17		24											
Hertsmere Borehamwood background	24		30											
Ann mean : period mean (ratio)														
East Herts Sawbridgeworth background	1.061		0.74											
Hertsmere Borehamwood background	1.014		0.82											
Ave	1.038		0.78									0.91		
AM	39.75	Ra												
Houghton Rd (39)			36.17											

2014 ppb data source H&B network	Jan	Feb	Mar	Apr	May	Jun	Jul	Aug	Sep	Oct	Nov	Dec	Ave	data capture?
East Herts Sawbridgeworth background	12	10	12	9	7	6	5	6	8	11	13	12	9	99
Hertsmere Borehamwood background	18	13	17	13	11	9	7	8	12	14	18	13	13	97
2014 converted to ug/m3 (ppb*1.913)														
East Herts Sawbridgeworth background	23	19	23	17	13	11	10	11	15	21	25	23	18	99
Hertsmere Borehamwood background	34	25	33	25	21	17	13	15	23	27	34	25	24	97
Period Mean	Jan - Jul		Oct											
East Herts Sawbridgeworth background	17		21											
Hertsmere Borehamwood background	24		27											
Ann mean : period mean (ratio)														
East Herts Sawbridgeworth background	1.061		0.84											
Hertsmere Borehamwood background	1.014		0.91											
Ave	1.038		0.88									0.96		
AM	46.84	Ra												
32 Luton Rd (37)			44.97											

2014 ppb data source H&B network	Jan	Feb	Mar	Apr	May	Jun	Jul	Aug	Sep	Oct	Nov	Dec	Ave	data c
East Herts Sawbridgeworth background	12	10	12	9	7	6	5	6	8	11	13	12	9	99
Hertsmere Borehamwood background	18	13	17	13	11	9	7	8	12	14	18	13	13	97
2014 converted to ug/m3 (ppb*1.913)														
East Herts Sawbridgeworth background	23	19	23	17	13	11	10	11	15	21	25	23	18	99
Hertsmere Borehamwood background	34	25	33	25	21	17	13	15	23	27	34	25	24	97
Period Mean	Jan		Mar		May & Jun		Oct & Nov							
East Herts Sawbridgeworth background	23		23		12		23							
Hertsmere Borehamwood background	34		33		19		31							
Ann mean : period mean (ratio)														
East Herts Sawbridgeworth background	0.769		0.769		1.423		0.77							
Hertsmere Borehamwood background	0.717		0.739		1.275		0.8							
Ave	<b>0.743</b>		<b>0.754</b>		<b>1.35</b>		<b>1.57</b>					<b>1.104</b>		
	AM	Ra												
	34.71	1.10												
<b>Market Sq Sandy (24) annualised tube ave AM*Ra</b>			<b>38.32</b>											
Hertsmere Borehamwood background		1.014		0.9		0.976								
Ave		<b>1.038</b>		<b>0.87</b>		<b>0.87</b>						<b>0.93</b>		
		AM	Ra											
		40.71	0.93											
<b>Poynters Rd/Katherine Dr (48)</b>			<b>37.86</b>											

The Sandy AURN automatic monitoring station data capture of NO<sub>2</sub> was 84% and so the 2014 NO<sub>2</sub> data set has been annualised.

Two long term automatic monitoring sites from Hertfordshire and Bedfordshire Monitoring Network were selected to provide data for this calculation. They were Est Herts Sawbridgeworth background and Hertsmere Borehamwood background.

2014 Ug/m3 NO2 data						data capture%									
	Ann ave														
East Herts Sawbridgeworth background	17					99									
Hertsmere Borehamwood background	11					100									
Period Mean	1/1/14 - 28/5/14	12/06/14 - 25/6/14	3/7/14 - 24/7/14	1/8/14 - 28/9/14	1/10/14 - 29-10-14	8/11/14 - 15/11/14	1/12/14 - 31/12/14								
East Herts Sawbridgeworth background	19	8	9.5	13	21	23	23								
Hertsmere Borehamwood background	27	13	13	15	25	36	25								
Ann mean : period mean (ratio)															
East Herts Sawbridgeworth background	0.894737	2.23684211	1.789474	1.307692	0.809524	0.73913	0.73913								
Hertsmere Borehamwood background	0.411985	0.84615385	0.846154	0.733333	0.68	0.305556	0.44								
Ave	<b>0.653361</b>	<b>1.54149798</b>	<b>1.317814</b>	<b>1.020513</b>	<b>0.744762</b>	<b>0.522343</b>	<b>0.589565</b>					<b>0.912837</b>			
	AM	Ra													
	30.61	0.91													
<b>Sandy annualised NO2 ave AM*Ra</b>		<b>27.94</b>													

Finally the Sandy AURN automatic monitoring station data capture was below 75% and so the 2014 PM<sub>10</sub> data set has also been annualised.

Two long term automatic monitoring sites from the Hertfordshire and Bedfordshire Monitoring Network were selected to provide data for this calculation. They were Hertsme Borehamwood background and Watford Town Hall.

2014 Ug/m3 PM10 data (grav equivalent)						data capture%	
	Ann ave						
Hertsme Borehamwood background	15					94	
Watford Town Hall	20					92	
Period Mean	5/1/14 - 4/3/14	1/4/14 - 28/5/14	27/12/14 - 31/12/14				
Hertsme Borehamwood background	12	16	18				
Watford Town Hall	16	23	26				
Ann mean : period mean (ratio)							
Hertsme Borehamwood background	1.25	0.9375	0.833333				
Watford Town Hall	1.25	0.869565	0.769231				
Ave	1.25	0.903533	0.801282				1.076766
	AM	Ra					
	16	1.08					
Sandy annualised PM10 ave AM*Ra			17.21				

## QA/QC of Automatic Monitoring

The Sandy site became an affiliated site in the AURN National Network in January 2009, which resulted in an FDMS upgrade to the PM<sub>10</sub> TEOM and also the installation of a PM<sub>2.5</sub> FDMS TEOM.

NO<sub>2</sub> is measured using an API chemiluminescent NO<sub>x</sub> analyser which is housed in an air conditioned cabin. Data is collected remotely using a GSM modem link. The analyser is serviced every six months by We Care 4 Air and is visited every two weeks by a council officer who calibrates it using bottled gas of a known concentration and the results are logged. Since the affiliation of the Sandy site with Defra's national network, an audit is to be undertaken every 6 months.

The data from the AQMS site at Sandy roadside is ratified by ERG to the AURN standard and QA/QC visits are carried out by AEA Ricardo on a regular basis.

## QA/QC of Diffusion Tube Monitoring

The latest diffusion tube precision studies for Gradko 20% TEA in water methodology show good precision in all 21 tests carried out during 2014. This information was obtained from <http://laqm.defra.gov.uk/diffusion-tubes/precision.html>

The latest WASP results can be seen below. Gradko's results scored 100% satisfactory.

http://laqm.defra.gov.uk/documents/LAQM-WASP-Rounds-121-124-and-AIR-PT-Rounds-1-3-4-6-(April-2 - Windows Internet Explorer

http://laqm.defra.gov.uk/documents/LAQM-WASP-Rounds-121-124-and-AIR-PT-Rounds-1-3-4-6-(April-2013--February-2015)-NO2-report.pdf

File Edit Go To Favorites Help

http://laqm.defra.gov.uk/documents/LAQM-WA...

**Table 1: Laboratory summary performance for WASP NO<sub>2</sub> PT Rounds 121-124 and AIR NO<sub>2</sub> PT rounds AR001, 3, 4 and 6**

The following table lists those UK laboratories undertaking LAQM activities that have participated in recent WASP/AIR NO<sub>2</sub> PT rounds and the percentage (%) of results submitted which were subsequently determined to be **satisfactory** based upon a z-score of  $\leq \pm 2$  as defined above.

WASP Round	WASP R121	WASP R122	WASP R123	WASP R124	AIR PT AR001	AIR PT AR003	AIR PT AR004	AIR PT AR006
Round conducted in the period	April – June 2013	July – September 2013	October – December 2013	January – March 2014	April – May 2014	July – August 2014	October – November 2014	January – February 2015
Aberdeen Scientific Services	100 %	100 %	NR [2]	75 %	100 %	100 %	100 %	100 %
Cardiff Scientific Services	100 %	100 %	100 %	100 %	NR [3]	NR [3]	NR [3]	NR [3]
Edinburgh Scientific Services	100 %	75 %	100 %	100 %	100 %	100 %	100 %	75 %
Environmental Services Group, Didcot [1]	100 %	100 %	100 %	100 %	100 %	100 %	100 %	87.5 %
Exova (formerly Clyde Analytical)	NR [2]	NR [2]	NR [2]	50 %	NR [3]	NR [3]	NR [3]	NR [3]
Glasgow Scientific Services	25 %	100 %	100 %	100 %	100 %	100 %	100 %	100 %
Gradko International [1]	100 %	100 %	100 %	100 %	100 %	100 %	100 %	100 %
Kent Scientific Services	75 %	100 %	100 %	100 %	NR [3]	NR [3]	NR [3]	NR [3]
Kirklees MSC	100 %	100 %	100 %	100 %	100 %	100 %	100 %	75 %
Lambeth Scientific Services	0 %	50 %	75 %	25 %	50 %	100 %	100 %	25 %
Milton Keynes Council	100 %	75 %	75 %	75 %	100 %	100 %	75 %	100 %
Northampton Borough Council	100 %	100 %	100 %	100 %	100 %	0 %	0 %	100 %
Somerset Scientific Services	100 %	75 %	100 %	100 %	100 %	100 %	100 %	100 %
South Yorkshire Air Quality Samplers	100 %	100 %	100 %	100 %	100 %	100 %	100 %	100 %
Staffordshire County Council	100 %	100 %	100 %	100 %	100 %	25 %	100 %	100 %
Tayside Scientific Services (formerly Dundee CC)	100 %	100 %	100 %	100 %	NR [2]	100 %	100 %	100 %
West Yorkshire Analytical Services	100 %	50 %	100 %	75 %	75 %	100 %	75 %	100 %

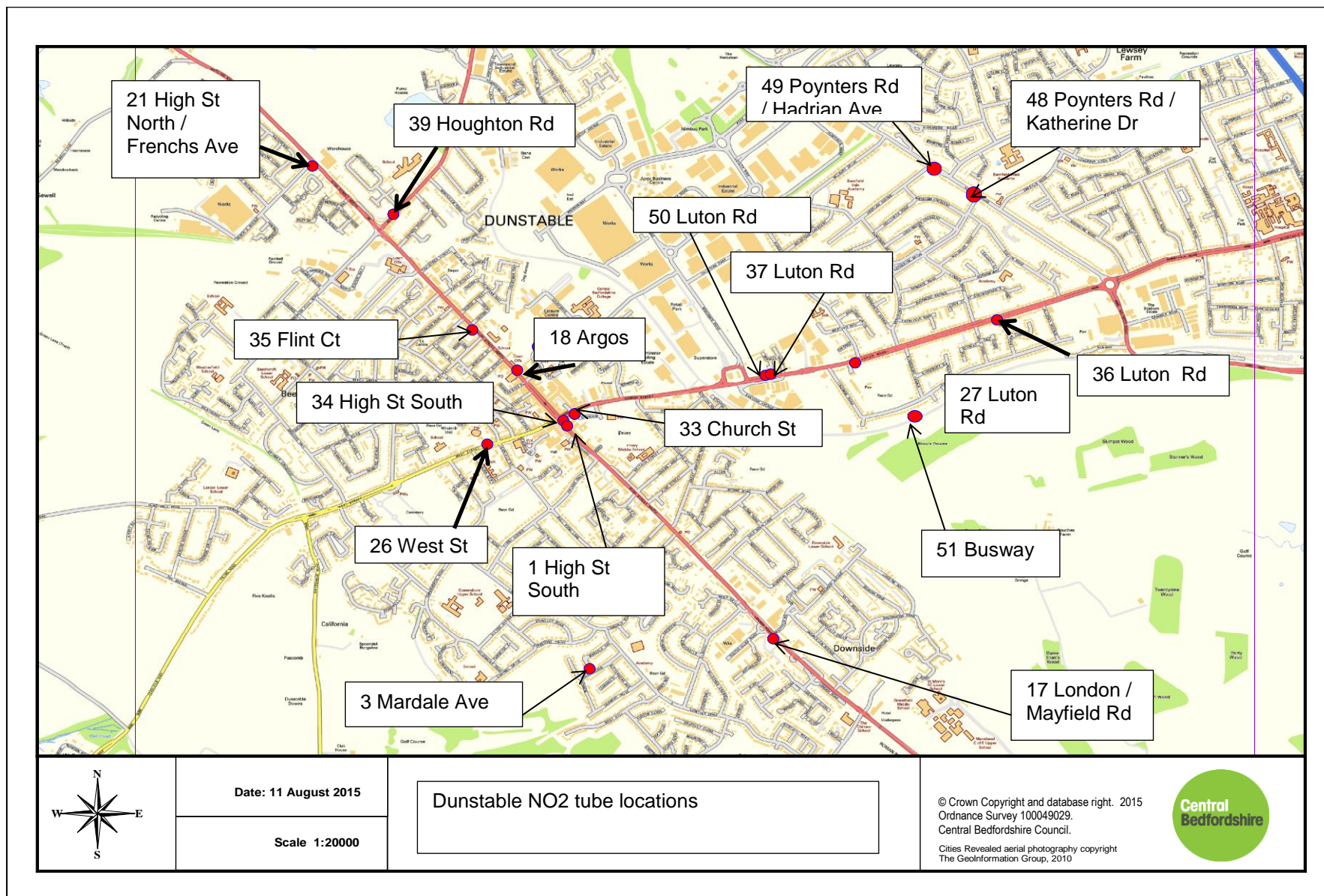
[1] Participant subscribed to two sets of test samples (2 x 4 test samples) in each WASP/AIR PT round.  
 [2] NR No results reported  
 [3] Kent Scientific Services, Cardiff Scientific Services and Exova (formerly Clyde Analytical) no longer carry out NO<sub>2</sub> diffusion tube monitoring and therefore did not submit results.

Done

Unknown Zone | Protected Mode: Off

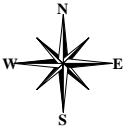
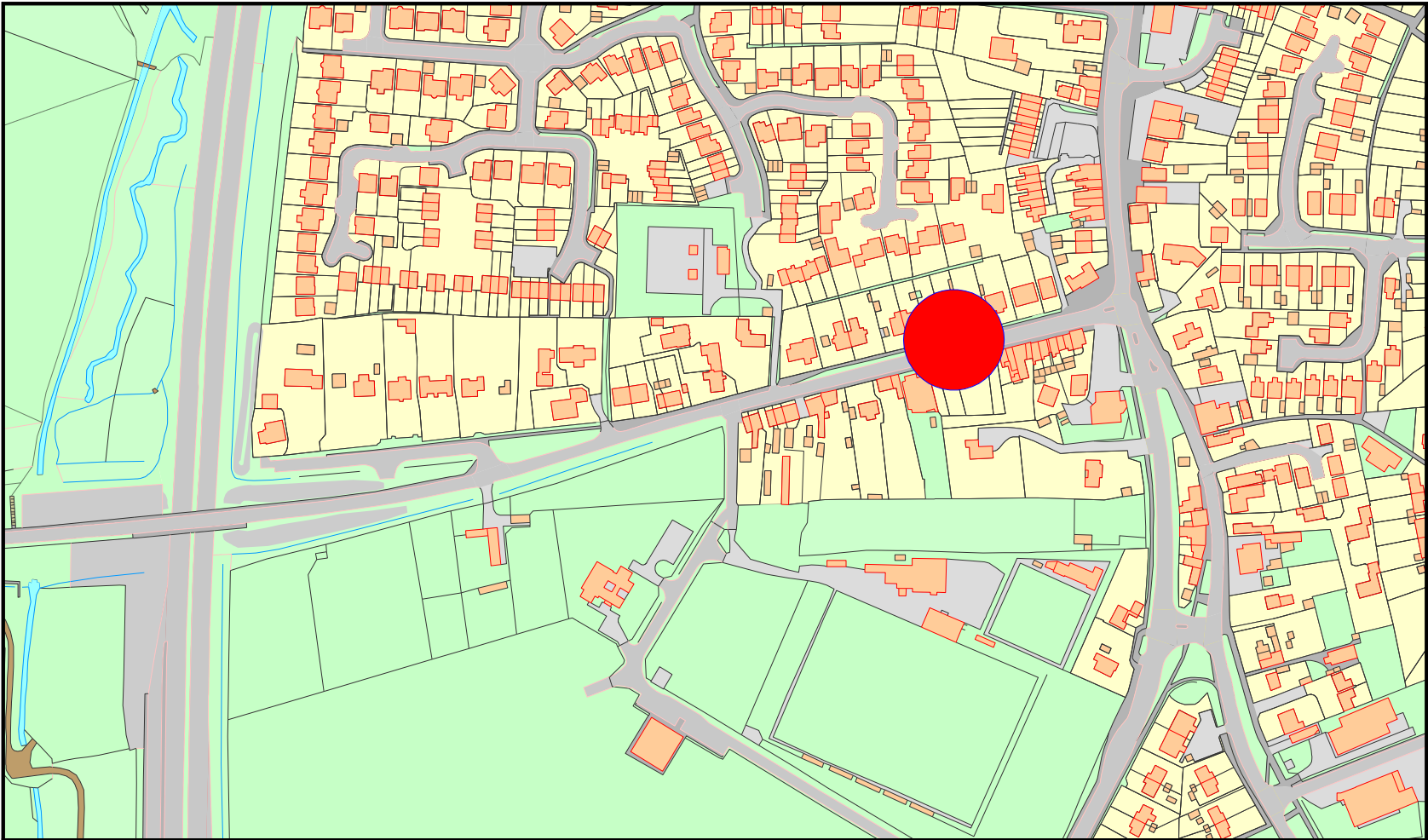
07:56 30/07/2015

## **Appendix B: Non-automatic (NO<sub>2</sub> diffusion tube) sites – location plans**









Date: 11 August 2015

Scale 1:2500

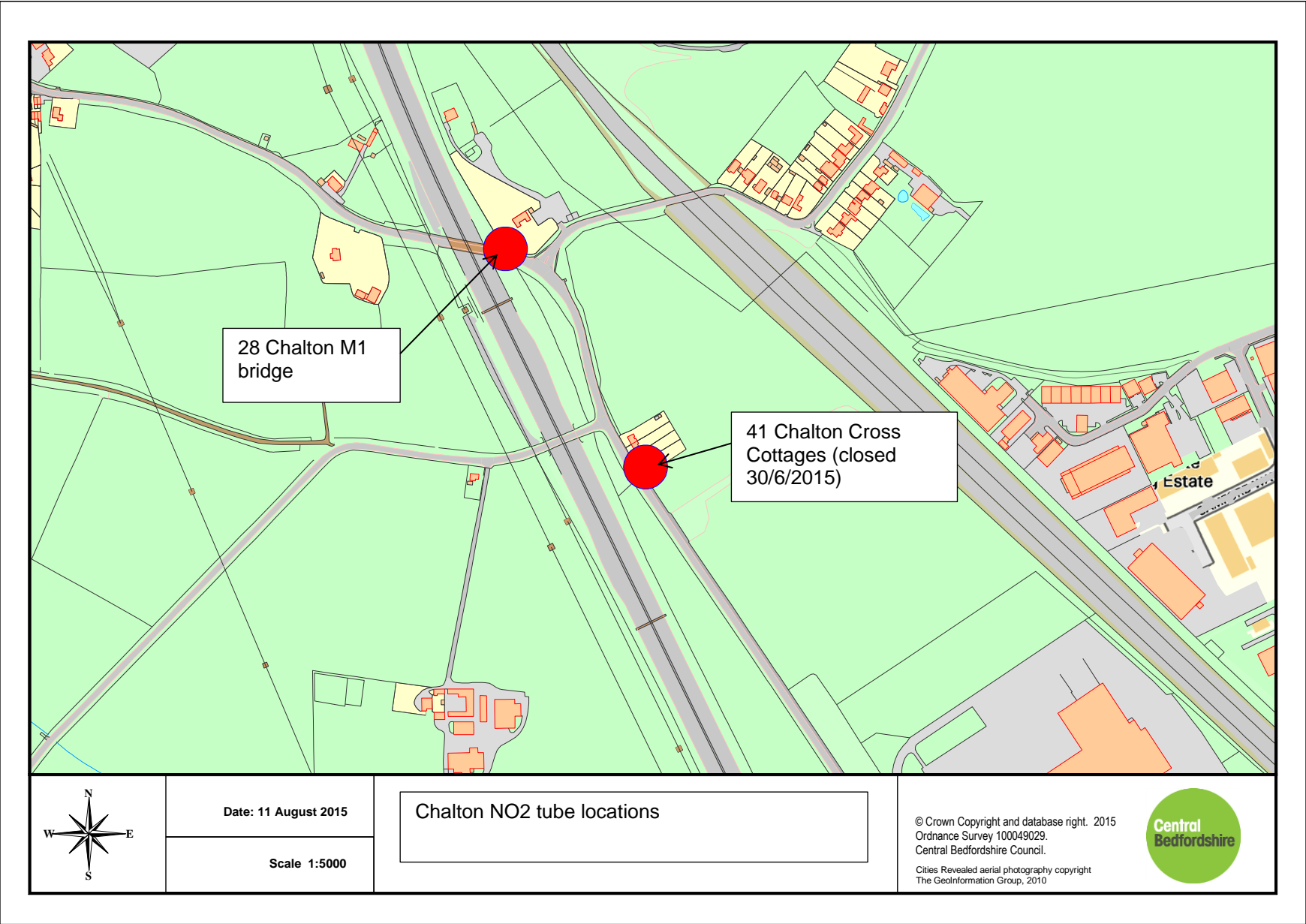
6 Barton NO2 tube location

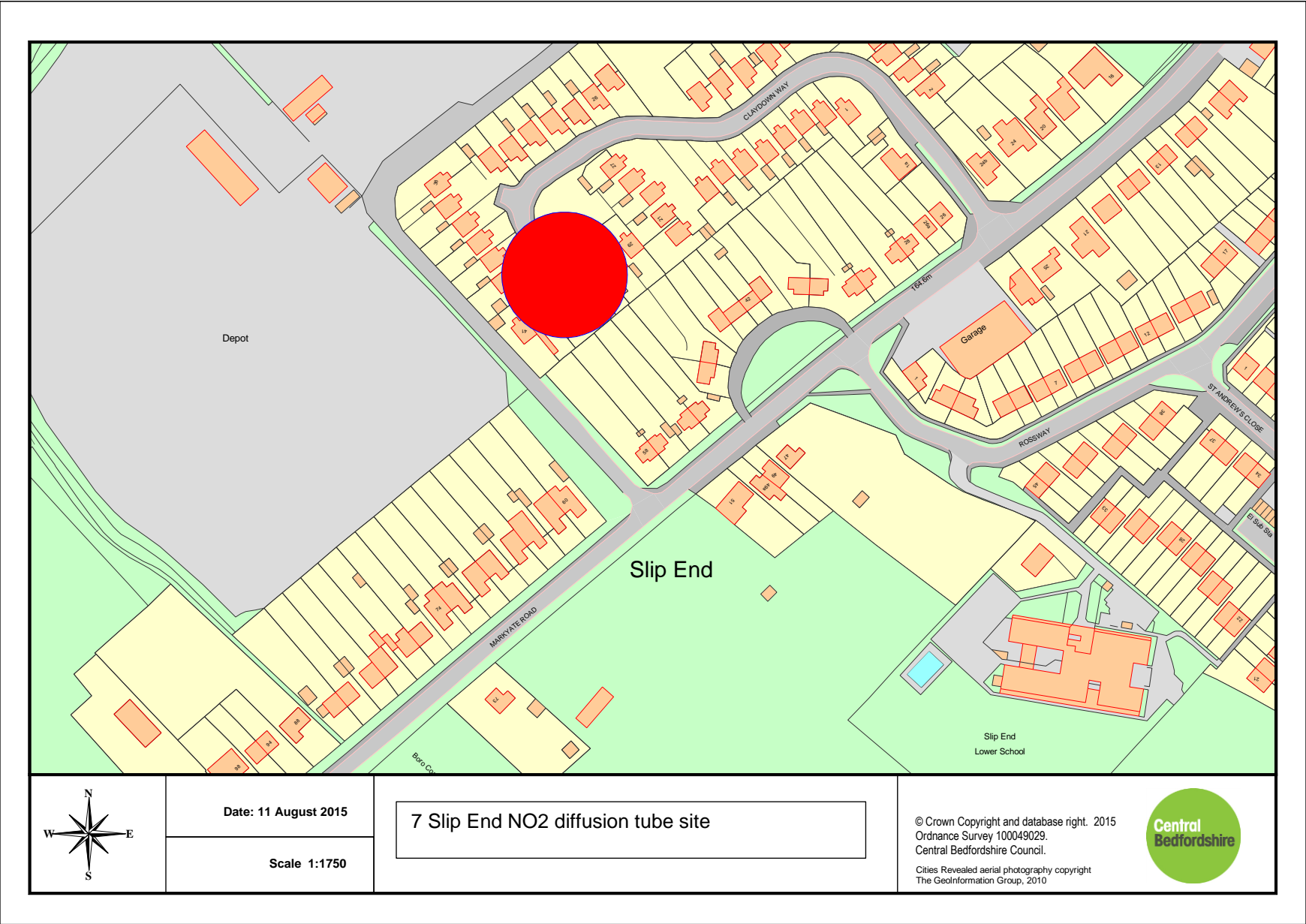
© Crown Copyright and database right. 2015  
Ordnance Survey 100049029.  
Central Bedfordshire Council.

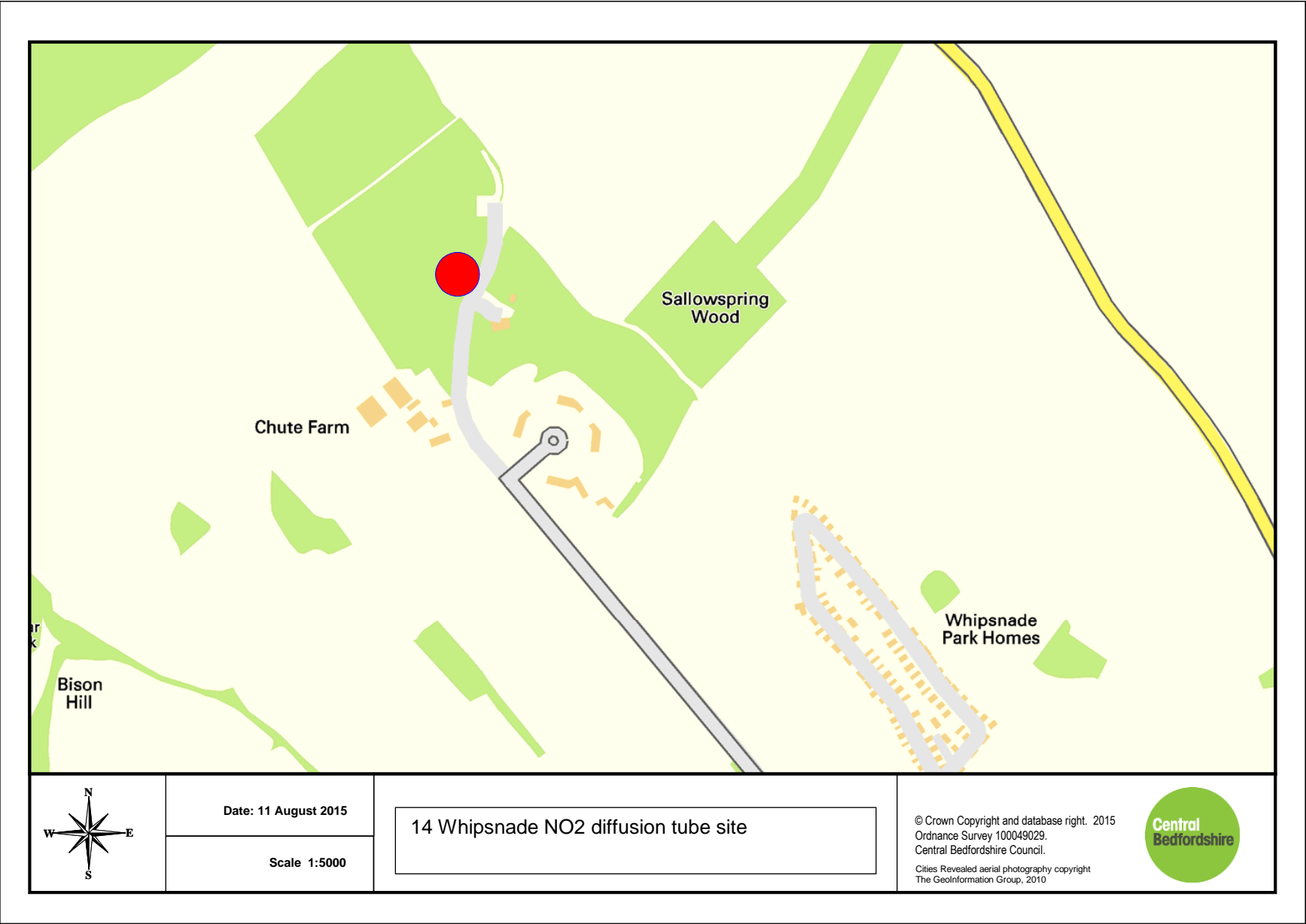
Cities Revealed aerial photography copyright  
The GeoInformation Group, 2010

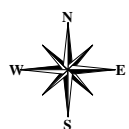
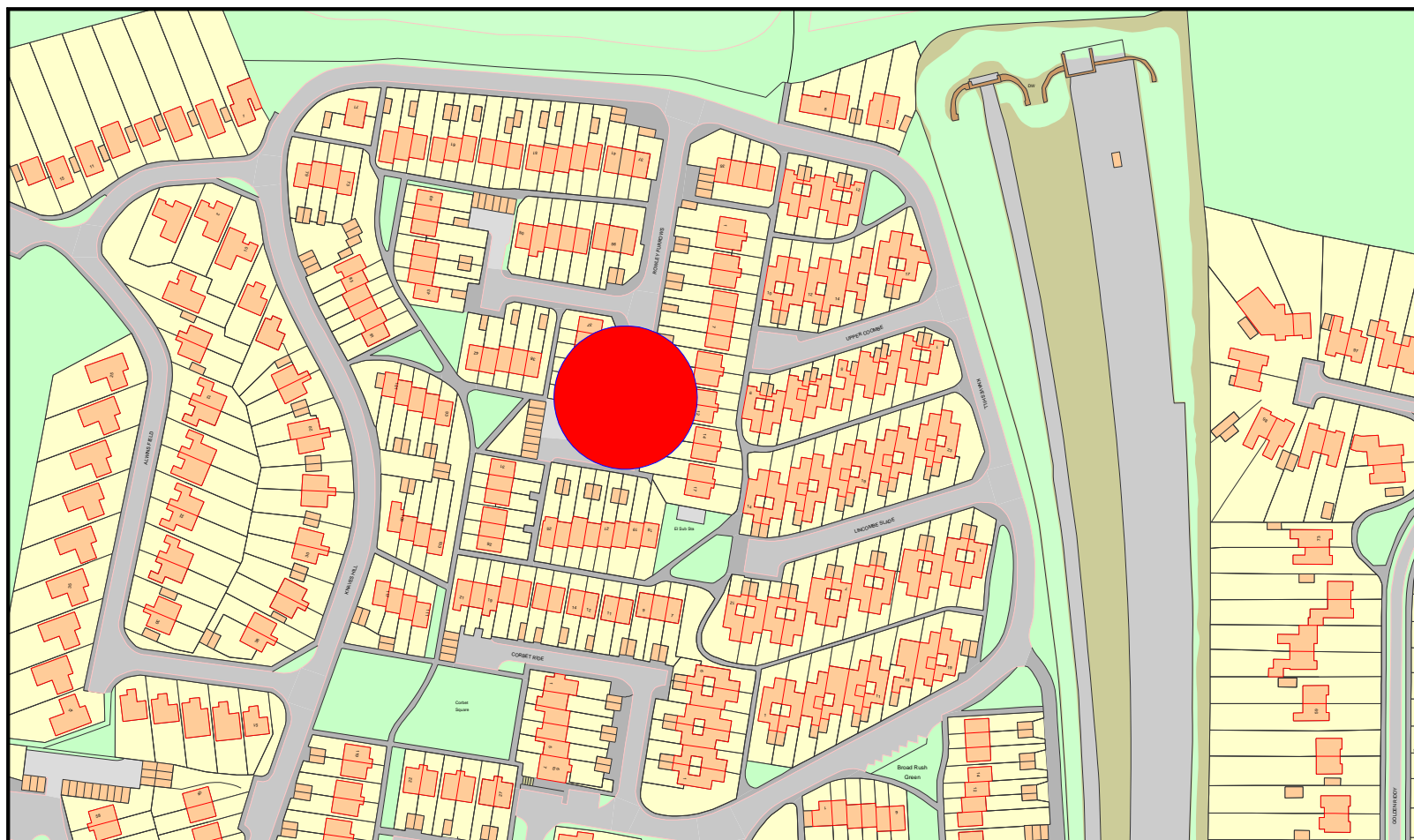












Date: 11 August 2015

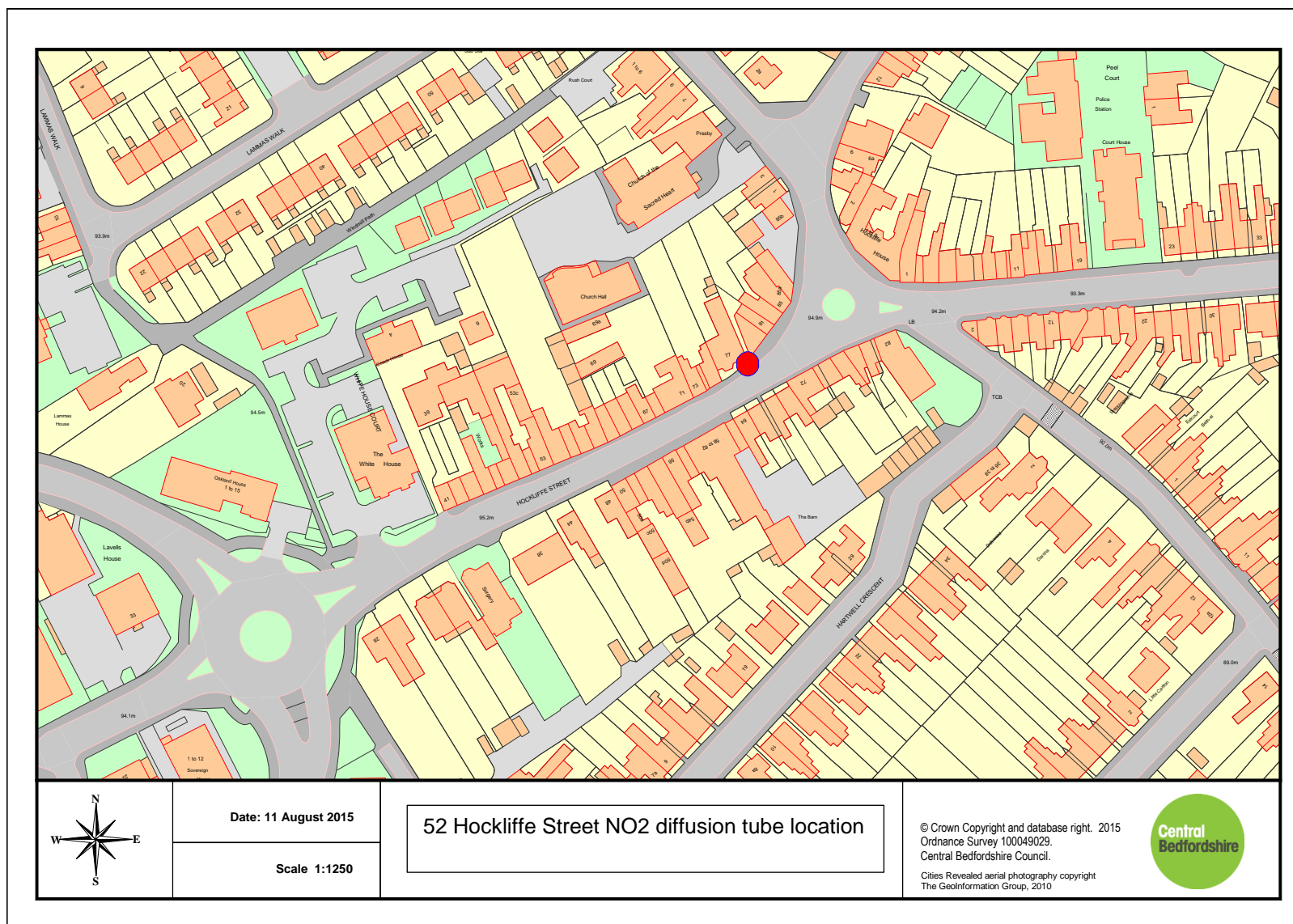
Scale 1:1750

5 Rowley Furrows NO2 diffusion tube location

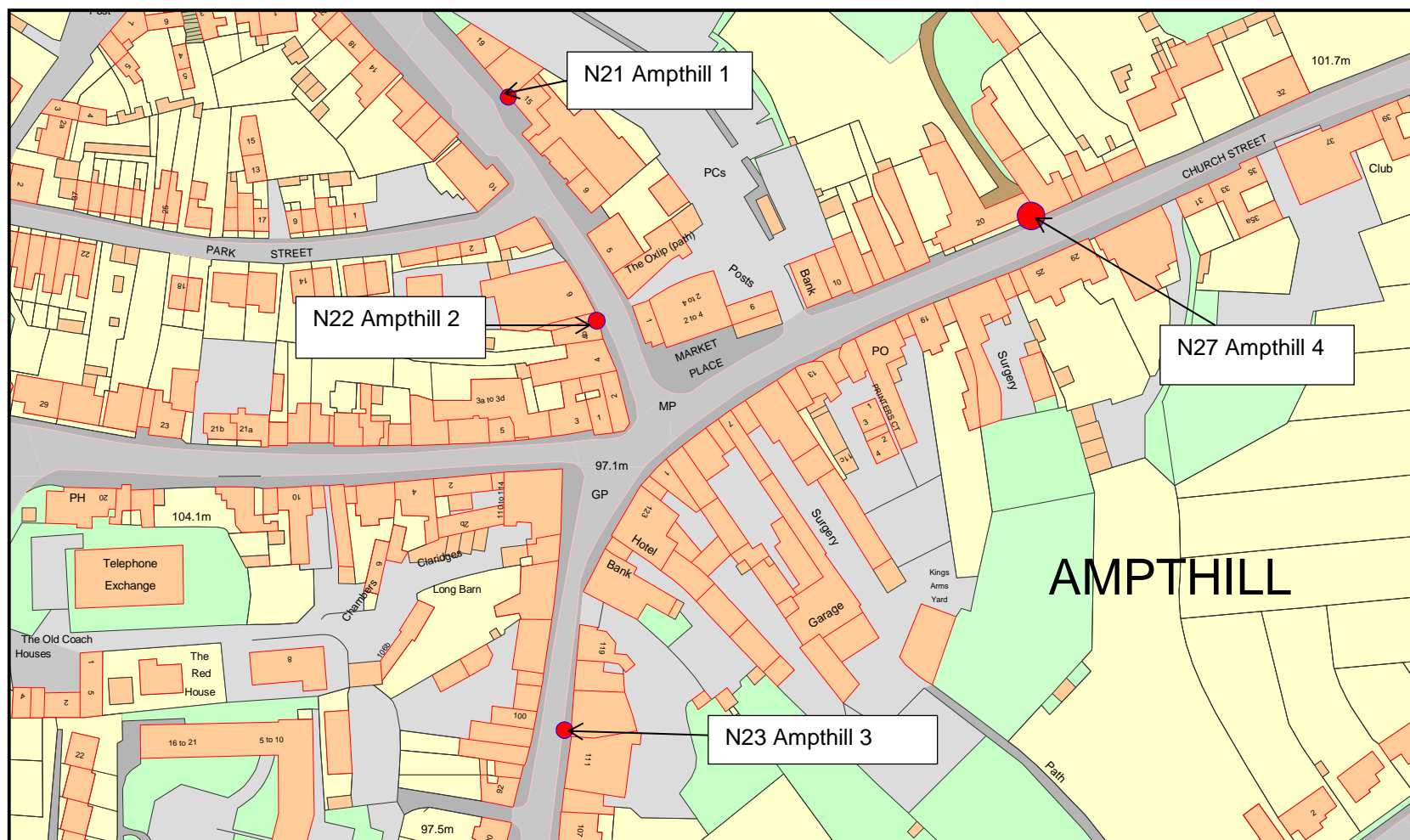
© Crown Copyright and database right. 2015  
Ordnance Survey 100049029.  
Central Bedfordshire Council.


Cities Revealed aerial photography copyright  
The GeoInformation Group, 2010

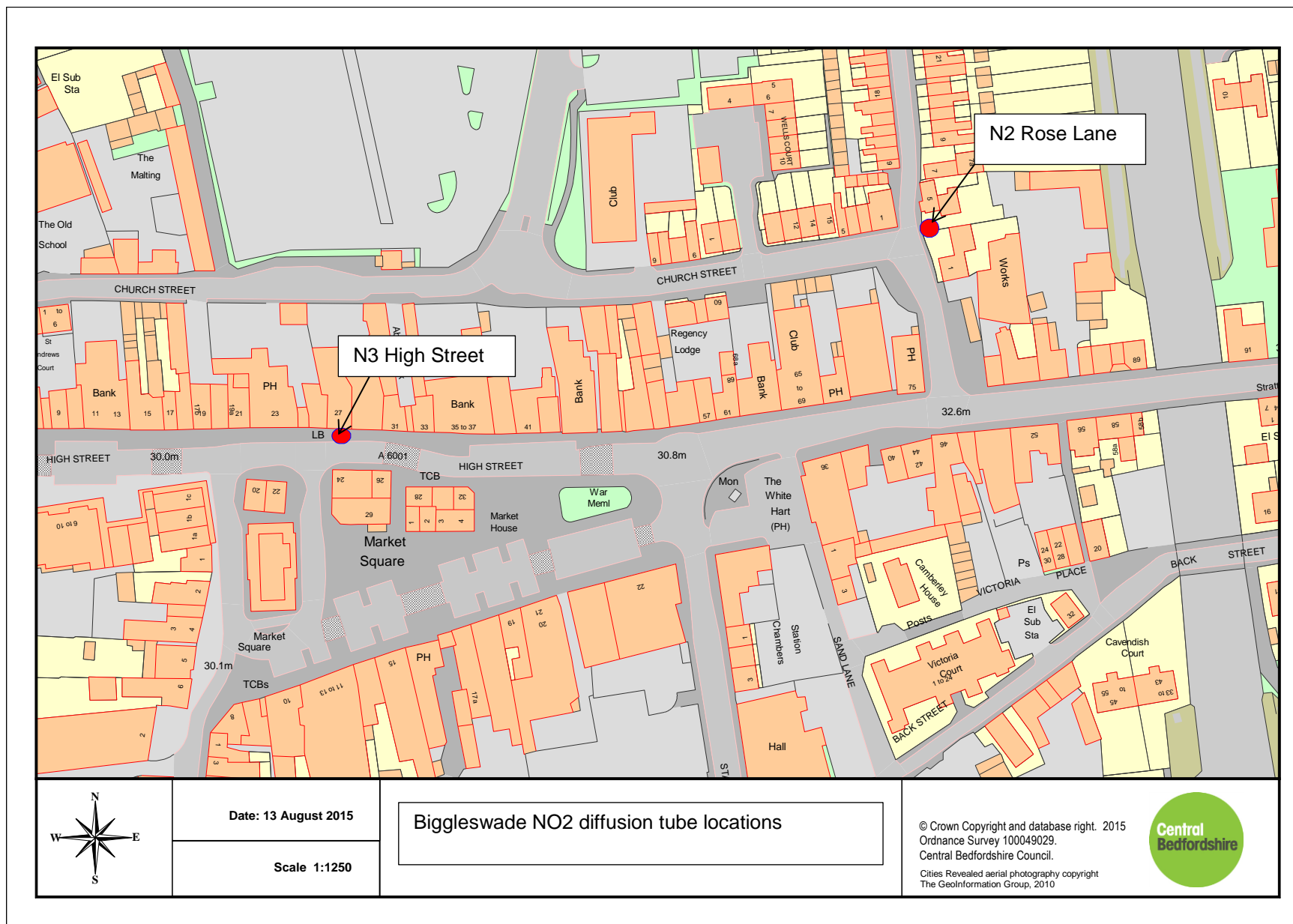









	Date: 13 August 2015	<p>Ampthill NO2 diffusion tube locations</p>	<p>© Crown Copyright and database right. 2015 Ordnance Survey 100049029. Central Bedfordshire Council. Cities Revealed aerial photography copyright The GeoInformation Group, 2010</p> 
	Scale 1:1250		



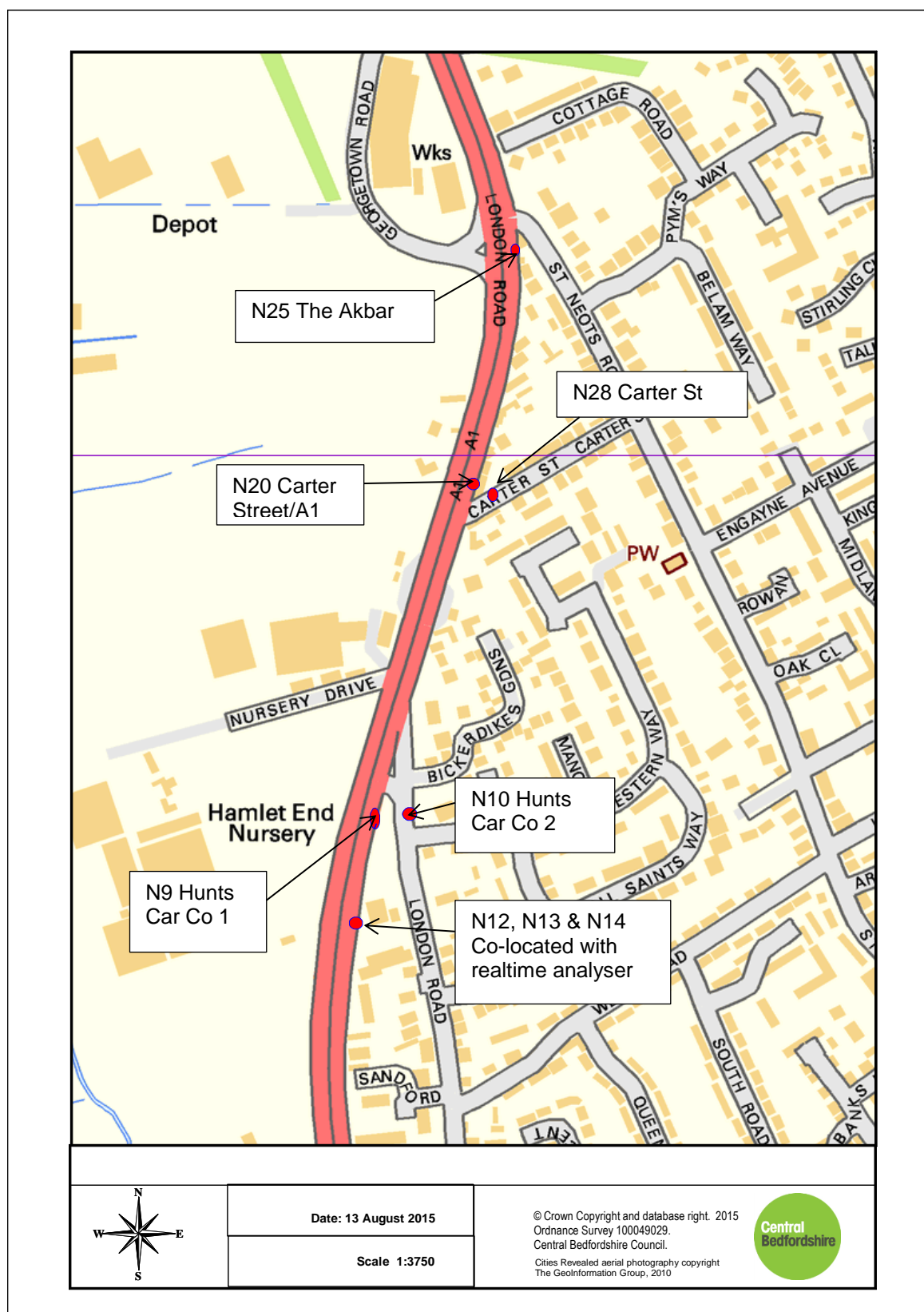


	Date: 13 August 2015	<p>Beeston NO2 diffusion tube location</p>	<p>© Crown Copyright and database right. 2015 Ordnance Survey 100049029. Central Bedfordshire Council.</p> <p>Cities Revealed aerial photography copyright The GeoInformation Group, 2010</p> 
	Scale 1:2000		





	Date: 13 August 2015	<b>Sandy NO2 diffusion tube locations for sites N1, N6, N16, N17, N18 &amp; N19</b>	<p>© Crown Copyright and database right. 2015 Ordnance Survey 100049029. Central Bedfordshire Council. Cities Revealed aerial photography copyright The GeoInformation Group, 2010</p>
	Scale 1:1250		



Sandy NO2 diffusion tube locations for sites N9, N10, N12, N13, N14, N20, N25 & N28



Brogborough N02 diffusion tube location (site now closed)

## **Appendix C – Monthly NO<sub>2</sub> data sets for 2014**

# Central Bedfordshire Council

2014 (ug/m3)																national	Local bias
		JAN	FEB	MAR	APR	MAY	JUNE	JULY	AUG	SEPT	OCT	NOV	DEC	AVE	Annualised	0.91	0.86
1	High St South	42.43	34.18		59.77	28.22	56.62	*				58.12	37.73	45.30	42.58	38.75	36.62
3	Mardale	18.31	15.96	19.84	15.62	14.55	10.26	10.65	11.43	13.66	12.19	26.19	15.79	15.94		14.50	13.70
5	Rowley	20.89	17.28	17.99	14.22	12.26	10.04	9.78		11.69	14.37	25.61	17.53	16.10		14.65	13.84
6	Sharpenhoe Road Barton	35.58	24.51	31.99	28.63	25.03	15.02	23.90	22.65	30.10	26.31			26.37	22.44	20.42	19.30
7	Claydown	24.32	18.50	25.00	20.00	17.85	14.81	14.21	14.34	19.68	17.43	24.89	17.68	19.47		17.72	16.74
10	Houghton	48.60	37.14	49.16			33.24	38.82	32.97			37.45	34.12	39.79	42.97	39.10	36.95
13	Tebworth	17.96	14.71	17.82	14.15	11.02	7.97	7.91			6.96	15.60		12.68	21.27	19.36	18.29
14	Sallowspring	17.95	10.32	16.92	11.94	10.66	7.55	8.49	8.36	11.76	11.58	25.03	11.35	13.18		11.99	11.33
17	London/Mayfield Rd	39.38	32.48	41.99	34.87	20.53	37.46	38.34	31.68	44.64	34.07	44.09	31.81	35.50		32.31	30.53
18	Argos (High St North)	47.38	41.48		53.36		48.76	52.33	46.86	56.34			34.42	46.29	60.64	55.18	52.15
20	Asda (Court Drive)	39.65	28.04														
21	High St North/Frenchs Ave	37.09	32.64	38.05	28.74	30.37	31.44					45.79	29.76	34.24	29.79	27.11	25.62
26	West St, Dunstable	28.61	30.63		32.83	29.77	29.94						34.93	31.12	30.19	27.47	25.96
27	Luton Rd o/s 89, D'ble	36.60	31.28	49.37	45.35	34.41	40.23	39.81	34.74		31.64		33.35	38.00	35.34	32.16	30.39
28	Luton Rd, Chalton	63.92	66.10	59.45	46.32	27.19	44.86	58.87	48.26	58.77	64.74	57.06	45.36	53.39		48.58	45.91
33	16 Church Street, Dunstable	45.61	40.47	47.40	41.70	44.14	42.56	43.19	43.24	47.21	36.90	45.05	41.93	42.90		39.03	36.89
34	5 High St South	41.06	43.09	45.32	55.98		65.89		55.23			62.27		52.27	53.84	48.99	46.30
35	6 Flint Court, High St North	40.45	35.84		32.01	35.21	34.91	34.43	31.35	40.04	35.78	45.84	37.35	36.87	36.5	33.22	31.39
36	247 Luton Road, Dunstable			73.76	41.58		36.57	39.01	38.14	57.50	29.10	55.83	45.55	45.91	50.5	45.96	43.43
37	32 Luton Road, Dunstable	44.87	34.06	54.19	45.78	50.63	51.14	57.00	46.11	63.19	38.81		45.10	46.84	44.97	40.92	38.67
39	15 Houghton Road	44.33	38.73	42.45	30.46	39.05	38.91	41.65	41.65	44.46		45.60	36.58	39.75	36.17	32.91	31.11
41	1 Chalton Cross Cottages	49.80	47.93	50.85	42.43	45.46	45.30	45.88	43.64	49.83		44.04		46.46	40.88	37.20	35.16
48	185 Poynters Road (Katherine Drive)	49.43	37.77	47.84	37.33	41.82	40.39	38.48	32.10	44.71	34.84		38.47	40.71	37.86	34.45	32.56
49	Poynters Road - o/s 241 (Hadrian Ave)	43.31	37.60	46.30	38.78	37.24	40.42	30.90	36.69	47.52	37.30	56.31	33.55	40.17		36.56	34.55
50	Luton Road D'ble (o/s 24)	49.90		48.76	51.67	44.07	45.81	48.26		63.08	44.49		43.65	47.08	53.2	48.41	45.75
51	Busway, r/o 62 Jeans Way, Dunstable							13.28	13.6	19.94	16.04	32.32	21.2	20.72	27.35	24.89	23.52
Site 20 (Asda) closed as tube frequently missing and levels below obj levels																	
tubes not changed in accordance with calendar dates																	

## Central Bedfordshire Council

Site Name		Site ref	Jan	Feb	Mar	Apr	May	Jun	Jul	Aug	Sep	Oct	Nov	Dec	Average	Annualised	bias 0.91	local bias 0.86	
A1	Sandy	1	52.58	45.52	45.04	48.81	40.02	32.44	42.6	35.92	35.26	41.93	55.33	49.81	45.41		41.32	39.05	
Rose Lane	Biggleswade	2	33.64	34.01	30.71	28.7	23.4	21.63	22.65	26.28	21.94	30.42	40.34	34.65	30.02		27.31	25.81	
High St	Biggleswade	3	37.13	35.82	43.15	45.53	38.72	35.9	34.44	41.01	35.66	31.16	42.86	39.68	38.44		34.98	33.06	
A1	Beeston	4	40.28	31.19	39.47	44.94	37.74	34.11	39.57	42.94	37.05	35.43	46.75	40.31	38.98		35.47	33.52	
Bedford Road	Sandy	6	43.17	43.88	38.96	38.67	28.25	29.09	33.82	38.41	31.59	42.8	45.98	44.13	38.88		35.38	33.43	
Highfield Crescent	Brogborough	7	32.79	29.11	31.13	31.81	25.06	22.98	26.96	27.09	27.89	24.91	33.12	29.52	28.74		26.15	24.72	
A1	Sandy	20	80.77	85.63	76.25	85.64	81.26	75.38	71.26	82.45	75.84	62.92	124.68	71.06	81.49		74.15	70.08	
A1	Hunts Car Company	9	45.96	43.93	39.91	48.73	35.03	35.26	37.38	40.64	35.88	41.38	60.18	45.82	43.36		39.46	37.29	
A1	Hunts Car Company 2	10	34.45	30.58	29.46	24.08	22.68	20.41	21.91	25.23	19.38	26.13	29.73	30.79	27.02		24.59	23.24	
Market Square	Sandy	24	35.18		37.46		32.74	30.1			30.42	29.36	43.42		34.71	38.32	34.87	32.96	
NOx Box 1	Sandy	12	38.97	41.73	32.65	35.81	29.21	28.51	29.32	39.9	27.07	31.21	37.97	39.76	34.51		31.41	29.68	
NOx Box 2	Sandy	13	40.69	39.35	36.93	31.2	31.89	31.58	32.43	39.47	26.51	39.3	33.85	44.5	36.17		32.92	31.11	
NOx Box 3	Sandy	14	41.02	39.25	36.75	34.94	35.48	28.65	31.05	35.17	25.4	38.57	43.72	36.48	36.59		33.30	31.47	
Rural Background	Battlesden	15	18.85	16.21	17.69	11.49	9.08	7.52	9.37	11.36	10.94	11.32	26.65	15.59	14.38		13.08	12.36	
Bedford Road South 1	Sandy	16	50.72	42.29	40.95	40.46	34.45	29.84	36.41	44.42	32.68	39.73	38.98	46.43	40.03		36.42	34.42	
Bedford Road South 2	Sandy	17	53.16	57.9	45.28	54.02	46.19	39.57	46.37	57.51	39.9	39.83	49.1	58.24	48.97		44.56	42.11	
Eddies Cottage	Sandy	18	36.94	37.13	35.19	35.46		12.56	31.91	34.18	25.52	33.04	34.78	38.92	32.88		29.92	28.28	
McMurdo	Sandy	19	27.63	39.25	32.05	29.25	25.01	24.3	22.57	31.54	21.93	35.01	36.61	29.78	30.15		27.43	25.93	
Amphill 1		21	35.27	29.06	33.17		29.76	26.04	26.09		29.11	23.36	36.65	27.29	29.63		26.97	25.48	
Amphill 2		22	49.14	55.19	46.57	43.7	42.57	37.37	41.26	45.55		47.58	55.71	45.25	46.43		42.25	39.93	
Amphill 3		23	50.42	56.34	51.7	52.27	55.88	44.2	47.62		47.36	45.9	70.94	49.01	52.43		47.71	45.09	
										Tubes not changed in accordance with schedule									

## **Appendix D – Luton Airport NO<sub>2</sub> diffusion tube data sets**

# Central Bedfordshire Council

Luton Airport 2014 data - Microsoft Word

Site Id	Name	Type	X Grid ref	Y Grid ref	Height	In AQMA	Monitoring co-located with continuous analyser	Relevant exposure? Y/N with distance (m) to receptor	Distance to kerb of nearest road (m)	Worst case exposure
LA01	Terminal patio	Other	511847	221336	7	N	N	N	n/a	n/a
LA02	Airport approach road	Roadside	511586	220978	1.9	N	N	N	3	n/a
LA03	Runway threshold western	Other	511156	220437	1.8	N	N	N	n/a	n/a
LA04	Runway threshold eastern	Other	513634	221198	2.0	N	N	N	n/a	n/a
LA05	Runway apron	Other	511703	221320	1.0	N	N	N	n/a	n/a
LA06	President Way jct	Roadside	511645	221679	2.3	N	N	N	3m	n/a
LA07	Terminal car park	Other	512181	221352	2.3	N	N	N	n/a	n/a
LA08	BAM co-loc	Other	511871	221142	1.7	N	Y	N	n/a	n/a
LA09	Stagenhoe Bottom Farm	Rural	517637	222554	1.2	N	N	N	n/a	n/a
LA10	Grove Farm, Slip End	Rural	507623	217724	1.2	N	N	N	n/a	n/a
LA13	Delmerend Lane, Flamstead	Rural	508426	214366	2.2	N	N	N	n/a	n/a
LA14	Stand 60	Roadside	511861	221579	1.0	N	N	N	n/a	n/a
LA15	Eaton Green Rd	Roadside	511899	222051	2.0	N	N	N	8m	n/a
LA16	Set down area	Kerbside	511954	221313	2.0	N	N	N	0.5m	n/a

Page: 1 of 3 Words: 518

13:33 30/07/2015



Luton Airport 2014 data - Microsoft Word

Site Id	Type	In AQMA?	Annual mean concentration ( $\mu\text{g}/\text{m}^3$ ) – adjusted for bias				
			2009(bias adj = 0.99)	2010 (bias adj = 0.93)	2011 (bias adj = 0.84)	2012 (bias adj = 0.84)	2013 (bias adj = 0.73)
LA01	Other	N	NDA	<b>46.81</b>	<b>44.6</b>	39.71	34
LA02	Roadside	N	35.81	<b>41.15</b>	<b>41.8</b>	40.17	32
LA03	Other	N	24.09	27.90	31.3	27.64	23
LA04	Other	N	19.55	21.93	23.3	20.01	19
LA05	Other	N	<b>46.61</b>	<b>50.22</b>	<b>49.8</b>	45.67	36
LA06	Roadside	N	<b>40.01</b>	<b>40.38</b>	<b>40.5</b>	36.43	30
LA07	Other	N	27.56	33.87	33.6	32.38	26
LA08	Other	N	31.02	35.65	35.9	32.07	26
LA09	Rural	N	13.37	14.57	14.6	12.22	12
LA10	Rural	N	14.52	16.90	16.0	13.52	13
LA13	Rural	N	15.68	20.23	17.7	16.72	14
LA14	Roadside	N	35.97	38.75	<b>42.3</b>	38.56	32
LA15	Roadside	N	NDA	33.02	<b>40.0</b>	31.54	26
LA16	Kerbside	N	NDA	NDA	NDA	NDA	32

Page: 2 of 3 | Words: 518 | 110% | 13:36 30/07/2015

Luton Airport 2014 data - Microsoft Word

Site Id	Location	Type	In AQMA?	Triplicate or co-located tube	Full calendar year data capture 2013 (no of months or %)	2013 Annual Mean Concentration (µg/m3) Bias Adj. factor = 0.73
LA01	Terminal patio	Other	N	N	12	34
LA02	Airport approach road	Roadside	N	N	12	32
LA03	Runway threshold western	Other	N	N	12	23
LA04	Runway threshold eastern	Other	N	N	12	19
LA05	Runway apron	Other	N	N	12	36
LA06	President Way jct	Roadside	N	N	12	30
LA07	Terminal car park	Other	N	N	12	26
LA08	BAM co-loc	Other	N	Y (co-located)	12	26
LA09	Stagenhoe Bottom Farm	Rural	N	N	12	12
LA10	Grove Farm, Slip End	Rural	N	N	12	13
LA13	Delmersend Lane, Flimstead	Rural	N	N	12	14
LA14	Stand 60	Roadside	N	N	12	32
LA15	Eaton Green Rd	Roadside	N	N	12	26
LA16	Set down area	Kerbside	N	N	12	32

Page: 1 of 3 Words: 518

13:34 30/07/2015